

TECHNICAL MANUAL

**ORGANIZATIONAL AND DIRECT SUPPORT
MAINTENANCE
REPAIR PARTS AND SPECIAL TOOLS LIST**

**HEATER, SPACE, MULTIFUEL, WITH
BLOWER, 28 VDC
MODEL VBM 15-1 V
NSN 4520-01-032-7376**

Approved for public release; distribution is unlimited.

*This manual supersedes TM 5-4520-242-23P, 18 March 1982, including all changes.

HEADQUARTERS, DEPARTMENT OF THE ARMY
9 FEBRUARY 1990

CHANGE
NO. 3

HEADQUARTERS
DEPARTMENT OF THE ARMY
WASHINGTON, D.C., 15 JANUARY 1993

Organizational and Direct Support Maintenance
Repair Parts and Special Tools List

HEATER, SPACE, MULTIFUEL, WITH
BLOWER, 28 VDC
MODEL VBM 15-1V
NSN 4520-01-032-7363

DISTRIBUTION STATEMENT A: Approved for public release: distribution is unlimited.

TM 5-4520-242-23P, 9 February 1990, is changed as follows:

1. Title changed as shown above.
2. Remove and insert pages as indicated below. New or changed text material is indicated by a vertical bar in the margin. An illustration change is indicated by a miniature pointing hand.

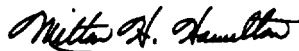
Remove pages

Insert pages

3. Retain this sheet in front of manual for reference purposes.

By Order of the Secretary of the Army:

Official:



MILTON H. HAMILTON
*Administrative Assistant to the
Secretary of the Army*
03255

GORDON R. SULLIVAN
*General, United States Army
Chief of Staff*

DISTRIBUTION:

To be distributed in accordance with DA Form 12-25-E, block no. 0995, requirements for TM 5-4520-242-23P.

CHANGE
NO. 2

HEADQUARTERS
DEPARTMENT OF THE ARMY
WASHINGTON, D.C., 9 NOVEMBER 1992

Organizational and Direct Support Maintenance
Repair Parts and Special Tools List

**HEATER, SPACE, MULTIFUEL, WITH
BLOWER, 28 VDC
MODEL VBM I&IV
NSN 4520-01-032-7363**

Approved for public release; Distribution is unlimited

TM 5-4520-242-23P, 9 February 1990 is changed as follows:

1. Remove and insert pages as indicated below. New or changed text material is indicated by a vertical bar in the margin. An illustration change is indicated by a miniature pointing hand.

Remove pages

9-1 and Fig. 10
I-1 and I-2
I-5 and I-6

Insert pages

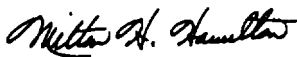
9-1 and Fig. 10
I-1 and I-2
I-5 and I-6

2. Retain this sheet in front of manual for reference purposes.

By Order of the Secretary of the Army:

GORDON R. SULLIVAN
General, *United States Army*
Chief of Staff

Official:


MILTON H. HAMILTON
Administrative Assistant to the
Secretary of the Army
03326

DISTRIBUTION:

To be distributed in accordance with DA Form 12-25-E, block no. 0995, requirements for
TM 5-4520-242-23P.

CHANGE

NO. 1

HEADQUARTERS
DEPARTMENT OF THE ARMY
WASHINGTON, D. C., 3 JULY 1992

Organizational and Direct Support Maintenance
Repair Parts and Special Tools List

**HEATER, SPACE, MULTIFUEL, WITH
BLOWER, 28 VDC
MODEL VBM 15-1V
NSN 4520-01-032-7376**

Approved for public release; distribution is unlimited

TM 5-4520-242-23P, 9 February 1990, is changed as follows:

1. Remove and insert pages as indicated below. New or changed text material is indicated by a vertical bar in the margin. An illustration change is indicated by a miniature pointing hand.

Remove pages

5-1 and 5-2
I-11 and I-12

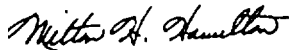
Insert pages

5-1 and 5-2
I-11 and I-12

2. Retain this sheet in front of manual for reference purposes.

By Order of the Secretary of the Army:

Official:



MILTON H. HAMILTON
*Administrative Assistant to the
Secretary of the Army*

01847

GORDON R. SULLIVAN
*General, United States Army
Chief of Staff*

DISTRIBUTION:

To be distributed in accordance with DA Form 12-25E, qty rqr block no. 0995

**Organizational and Direct Support Maintenance
Repair Parts and Special Tools List
for
HEATER, SPACE, MULTIFUEL, WITH BLOWER, 28 VDC
MODEL VBM 15-IV
NSN 4520-01-032-7363**

Current as of 4 August 1989

REPORTING OF ERRORS AND RECOMMENDING IMPROVEMENTS

You can help improve this manual, If you find any mistake or if you know of a way to improve the procedures, please let us know, Mail your letter, DA Form 2028 (Recommended Changes to Publications and Blank Forms) or DA Form 2028-2 located in the back of this manual direct to: Commander, U.S. Army Troop Support Command, ATTN: AMSTR-MCTS, 4300 Goodfellow Blvd., St. Louis, MO 63120-1798. A reply will be furnished directly to you.

Approved for public release; distribution is unlimited.

TABLE OF CONTENTS

		Page	Illus/ Figure
Section I.	Introduction	1	
Section II.	Repair Part List		
Group 01	Not Used		
Group 02	Housing Panels and Louvers		
	Housing Panels and Louvers	1-1	1
	Case Assembly	2-1	2
Group 03	Electrical		
	Control Panel	3-1	3
	Control Panel, Timer, Reset Assembly	4-1	4
	Ignition Power Supply	5-1	5
	Wiring Terminal Blocks, and Motor Control Resistor	6-1	6
	Room Thermostat, Thermostat Relays, and Delay Relay	7-1	7
Group 04	Burner Assembly		
	Burner Assembly	8-1	8
Group 05	Fuel Assembly		
	Fuel Tubing and Fittings.....	9-1	9
	Float Bowl Assembly and Solenoid Valve	10-1	10
	Fuel Filter	11-1	11
	Fuel Pump	12-1	12

*This manual supersedes TM 5-4520-242-23P, 18 March 1982, including all changes.

TABLE OF CONTENTS (cont)

		Page	Illus/ Figure
Group 06	Heat Exchanger		
	Heat Exchanger and Rainshield	13-1	13
Group 07	Blower Assembly		
	Blower Support Assembly, Blower Motor	14-1	14
	Blower Assembly, Motor	15-1	15
	Motor, Blower	16-1	16
	Housing Assembly, Blower, ,,...	17-1	17
Group 08	Compressor Assembly		
	Compressor Mounting Assembly	18-1	18
	Compressor Assembly	19-1	19
Group 09	Bulk Material		
	Bulk	Bulk-1	Bulk
Section III.	Special Tools List		
Section IV.	Cross Reference Indexes		
	National Stock Number Index....	I-1	
	Part Number index	I-3	
	Figure and Item Number index...	I-14	

ORGANIZATIONAL AND DIRECT SUPPORT MAINTENANCE
REPAIR PARTS AND SPECIAL TOOLS LIST

HEATER, SPACE, MULTIFUEL, WITH BLOWER, 28 VDC
MODEL VBM 15-IV
NSN 4520-01-032-7376

SECTION I. INTRODUCTION

1. **SCOPE.** This RPSTL lists and authorizes spares and repair parts; special tools; special test, measurement, and diagnostic equipment (TMDE); and other special support equipment required for performance of organizational and direct support of the Heater, Space. It authorizes the requisitioning, issue, and disposition of spares, repair parts and special tools as indicated by the source, maintenance and recoverability (SMR) codes.

2. **GENERAL.** In addition to this section, Introduction, this Repair Parts and Special Tools List is divided into the following sections:

a. **Section II. Repair Parts List.** A list of spares and repair parts authorized by this RPSTL for use in the performance of maintenance. The list also includes parts which must be removed for replacement of the authorized parts. Parts lists are composed of functional groups in ascending alphanumeric sequence, with the parts in each group listed in ascending figure and item number sequence. Bulk materials are listed in item name sequence. Repair parts kits are listed separately in their own functional group within Section II. Repair parts for repairable special tools are also listed in this section. Items listed are shown on the associated illustration(s)/figure(s).

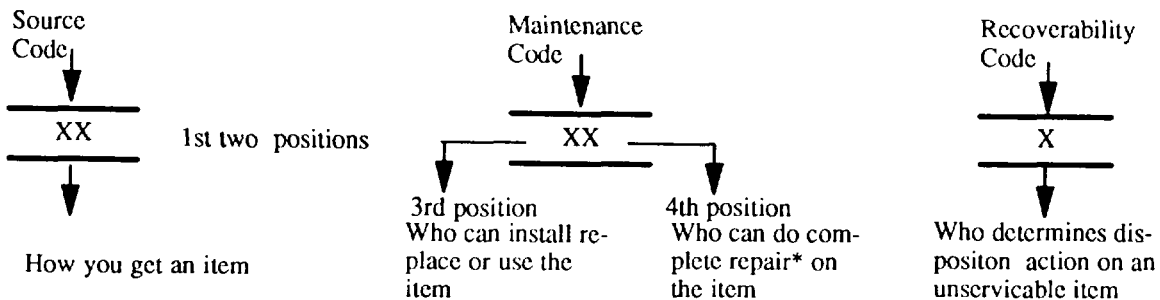
b. **Section III. Special Tools List.** A list of special tools, special TMDE, and other special support equipment authorized by this RPSTL (as indicated by Basis of Issue (BOI) information in DESCRIPTION AND USABLE ON CODE column) for the performance of maintenance.

c. **Section IV. Cross-references indexes.** A list, in National item identification Number (NIIN) sequence, of all National stock numbered items appearing in the listing, followed by a list in alphanumeric sequence of all part numbers appearing in the listings. National stock numbers and part numbers are cross referenced to each illustration figure and item number appearance. The figure and item number index lists figure and item number in alphanumeric sequence and cross references NSN, FSCM and part number.

3. **EXPLANATION OF COLUMNS (SECTIONS II AND III).**

a. **ITEM NO. (Column (1)).** Indicates the number used to identify items called out in the illustration.

b. **SMR Code (Column (2)).** The Source, Maintenance, and Recoverability (SMR) code is a 5-position code containing supply/requisitioning information, maintenance category authorization criteria, and disposition instruction, as shown in the following breakout:



NOTE

● Complete Repair: Maintenance capacity, capability, and authority to perform all corrective maintenance tasks of the "Repair" function in a use/user environment in order to restore serviceability to a failed item.

(1) Source Code. The source code tells you how to get an item needed for maintenance, repair, or overhaul of an end item/equipment, Explanations of source codes follows:

Code	Explanation
PA PB PC** PD PE PF PG	Stocked items; use the applicable NSN to request/requisition items with these source codes. They are authorized to the category indicated by the code entered in the 3d position of the SMR code.
KD KF KB	● *NOTE: Items coded PC are subject to deterioration. Items with these codes are not to be requested/requisitioned individually. They are part of a kit which is authorized to the maintenance category indicated in the 3d position of the SMR code, The complete kit must be requisitioned and applied.
MO-(Made at org. AVUM Level MF-(Made at DS/ AVUM Level MH-(Made at GS Level) ML-Made at Specialized Repair Activity (SRA) MD-(Made at Depot)	Explanation Items with these codes are not to be requested/requisitioned individually. They must be made from bulk material which is identified by the part number in the DESCRIPTION and USABLE ON CODE (UOC) column and listed in the Bulk Material group of the repair park list in this RPSTL. If the item is authorized to you by the 3d position code of the SMR code, but the source code indicates it is made at a higher level, order the item from the higher level of maintenance.

	Explanation
AO -- (Assembled by org/AVUM Level)	Items with these codes are not to be requested/requisitioned individually. The parts that make up the assembled item must be requisitioned or fabricated and assembled at the level of maintenance indicated by the source code. If the 3d position code of the SMR code authorizes you to replace the item, but the source code indicates the items are assembled at a higher level, order the item from the higher level of maintenance.
AF -- (Assembled by DS/AVIM Level)	
AH -- (Assembled by GS Category)	
AL -- (Assembled by)	
AD -- (Assembled by Depot)	

Code	Explanation
XA --	Do not requisition "XA" -coded item. Order its next higher assembly. (Also, refer to the NOTE below.)
XB --	If an "XB" item is not available from salvage, order it using the FSCM and pad number given.
XC --	Installation drawing, diagram, instruction sheet, field service drawing, that is identified by manufacturer's part number.
XD --	Item is not stocked. Order an "XD" -coded item through normal supply channels using the FSCM and part number given, if no NSN is available.

NOTE

Cannibalization or controlled exchange, when authorized, maybe used as a source of supply for items with the above source codes, except for those source coded "XA or those aircraft support items restricted by requirements of AR 750-1.

- (2) **Maintenance Code.** Maintenance codes tells you the level(s) of maintenance authorized to USE and REPAIR support items. The maintenance codes are entered in the third and fourth positions of the SMR code as follows:
- (a) The maintenance code entered in the third position tells you the lowest maintenance level authorized to remove, replace, and use an item. The maintenance code entered in the third position will indicate authorization to one of the following levels of maintenance.

Code	Application/Explanation
C	—Crew or operator maintenance done within organizational or aviation unit maintenance.
O	—Organizational or aviation unit category can remove, replace, and use the item.

F — Direct support or aviation intermediate level can remove, replace, and use the item.

H — General support level can remove, replace, and use the item.

L — Specialized repair activity can remove, replace, and use the item.

D — Depot level can remove, replace, and use the item.

(b) The maintenance code entered in the fourth position tells whether or not the item is to be repaired and identifies the lowest maintenance level with the capability to do complete repair (i.e., perform all authorized repair functions.) NOTE: Some limited repair may be done on the item at a lower level of maintenance, if authorized by the Maintenance Allocation Chart (MAC) and SMR codes. This position will contain one of the following maintenance codes.

Code	Application/Explanation
O	Organizational or (aviation unit) is the lowest level that can do complete repair of the item.
F	Direct support or aviation intermediate is the lowest level that can do complete repair of the item.
H	General Support is the lowest level that can do complete repair of the item.
L	Specialized repair activity is the lowest level that can do complete repair of the item.
D	Depot is the lowest level that can do complete repair of the item.
Z	Nonreparable. No repair is authorized.
B	No repair is authorized. (No parts or special tools are authorized for the maintenance of a "B" coded item). However, the item may be reconditioned by adjusting, lubricating, etc., at the user level.

(3) Recoverability Code. Recoverability codes are assigned to items to indicate the disposition action on unserviceable items. The recoverability code is entered in the fifth position of the SMR Code as follows:

Recoverability Codes	Application/Explanation
Z	Nonreparable item. When unserviceable, condemn and dispose of the item at the level of maintenance shown in 3d position of SMR Code.

Recoverability

Codes	Application/Explanation
0	—Reparable item. When uneconomically repairable, condemn and dispose of the item at organizational or aviation unit level
F	—Reparable item. When uneconomically repairable, condemn and dispose of the item at the direct support or aviation intermediate level
H	—Reparable item. When uneconomically repairable, condemn and dispose of the item at the general support level.
D	—Reparable item. When beyond lower level repair capability, return to depot. Condemnation and disposal of item not authorized below depot level.
L	—Reparable item. Condemnation and disposal not authorized below specialized repair activity (SRA).
A	—Item requires special handling or condemnation procedures because of specific reasons (e.g. , precious metal content, high dollar value, critical material, or hazardous material). Refer to appropriate manuals/directives for specific instructions.

c. **FSCM (Column (3))**. The Federal Supply Code for Manufacturer (FSCM) is a 5-digit numeric code which is used to identify the manufacturer, distributor, or Government agency, etc., that supplies the item.

d. **PART NUMBER (Column (4))**. Indicates the primary number used by the manufacturer, (individual, company, firm, corporation, or Government activity), which controls the design and characteristics of the item by means of its engineering drawings, specifications standards, and inspection requirements to identify an item or range of items.

NOTE

When you use an NSN to requisition an item, the item you receive may have a different part number from the part ordered.

e. **DESCRIPTION AND USABLE ON CODE (UOC) (Column (5))**. This column includes the following information:

- (1) The Federal item name and, when required, a minimum description to identify the item.
- (2) The physical security classification of the item is indicated by the parenthetical entry, e.g., Phy Sec CI - Confidential, Phy Sec CI (S) - Secret, Phy Sec CI (T) - Top Secret.
- (3) Items that are included in kits and sets are listed below the name of the kit or set.
- (4) Spare/repair parts that make up an assembled item are listed immediately following the assembled item line entry.
- (5) Part numbers for bulk materials are referenced in this column in the line item entry for the item to be manufactured/fabricated.
- (6) When the item is not used with all serial numbers of the same model, the effective serial numbers are shown on the last line(s) of the description (before UOC).

- (7) The usable on code, when applicable (see paragraph 5, Special Information).
- (8) In the Special Tools List section, the basis of issue (BOI) appears as the last line(s) in the entry for each special tool, special TMDE, and other special support equipment. When density of equipments supported exceeds density spread indicated in the basis of issue, the total authorization is increased proportionately.
- (9) The statement "END OF FIGURE" appears just below the last item description in Column 5 for a given figure in both Section II and Section III.
- (10) The indenture, shown as dots appearing before the repair part, indicates that the item is a repair part of the next higher assembly.

f. **QTY (Column (6)).** The QTY (quantity per figure column) indicates the quantity of the item used in the breakout shown on the illustration figure, which is prepared for a functional group, subfunctional group, or an assembly. A "V" appearing in this column in lieu of a quantity indicates that the quantity is variable and may vary from application to application.

4. EXPLANATION OF COLUMNS (SECTION IV).

a. NATIONAL STOCK NUMBER (NSN) INDEX.

- (1) **STOCK NUMBER column.** This column lists the NSN by National item identification number (NIIN) sequence. The NIIN consists of the last nine digits of the

$$\text{NSN} \quad \text{NSN}$$
NSN, i.e. $(5305-01-574-1467)$.
 NIIN

When using this column to locate an item, ignore the first 4 digits of the NSN. However, the complete NSN should be used when ordering items by stock number.

- (2) **FIG. column.** This column lists the number of the figure where the item is identified/located. The figures are in numerical order in Section II and Section III.
- (3) **ITEM column.** The item number identifies the item associated with the figure listed in the adjacent FIG. column. This item is also identified by the NSN listed on the same line.

b. **PART NUMBER INDEX.** Part numbers in this index are listed by part number in ascending alphanumeric sequence (i e. , vertical arrangement of letter and number combination which places the first letter or digit of each group in order A through Z, followed by the numbers 0 through 9 and each following letter or digit in like order).

- (1) **FSCM column.** The Federal Supply Code for Manufacturer (FSCM) is a 5-digit numeric code used to identify the manufacturer, distributor, or Government agency, etc., that supplies the item.
- (2) **PART NUMBER column.** Indicates the primary number used by the manufacturer (individual, firm, corporation, or Government activity), which controls the design and characteristics of the item by means of its engineering drawings, specifications standards, and inspection requirements to identify an item or range of items,
- (3) **STOCK NUMBER column.** This column lists the NSN for the associated part number and manufacturer identified in the PART NUMBER and FSCM columns to the left.

- (4) **FIG. column.** This column lists the number of the figure where the item is identified/located in Sections II and III.
- (5) **ITEM column.** The item number is that number assigned to the item as it appears in the figure referenced in adjacent figure number column.

c. FIGURE AND ITEM NUMBER INDEX.

- (1) **FIG. column.** This column lists the number of the figure where the item is identified/located in Section II and III.
- (2) **ITEM column.** The item number is that number assigned to the item as it appears in the figure referenced in the adjacent figure number column.
- (3) **STOCK NUMBER column.** This column lists the NSN for the item.
- (4) **FSCM column.** The Federal Supply Code for Manufacturer (FSCM) is a 5-digit numeric code used to identify the manufacturer, distributor, or Government agency, etc., that supplies the item.
- (5) **PART NUMBER column.** Indicates the primary number used by the manufacturer (individual, firm, corporation, or Government activity), which controls the design and characteristics of the item by means of its engineering drawings, specifications standards, and inspection requirements to identify an item or range of items.

5. SPECIAL INFORMATION.

a. USABLE ON CODE. The usable on code appears in the lower left corner of the Description column heading. Usable on codes are shown as "UOC:" in the Description Column (justified left) on the last line applicable item description/nomenclature. Uncoded items are applicable to all models.

b. ASSOCIATED PUBLICATIONS. The publications listed below pertains to the Heater, Space Multifuel and its components.

Publication	Short Title
TM 5-4520-242-13	Heater, Space, Multifuel, with Blower, 28VDC

6. HOW TO LOCATE REPAIR PARTS.

a. When National Stock Number or Part Number is NOT known.

- (1) **First.** Using the table of contents, determine the assembly group or subassembly group to which the item belongs. This is necessary since figures are prepared for assembly groups and subassembly groups, and listings are divided into the same groups.
- (2) **Second. Find** the figure covering the assembly group or subassembly group to which the item belongs.
- (3) **Third.** Identify the item on the figure and note the item number.
- (4) **Fourth.** Refer to the Repair Parts List for the figure to find the part number for the item number noted on the figure.

(5) Fifth. Refer to the Part Number Index to find the NSN, if assigned.

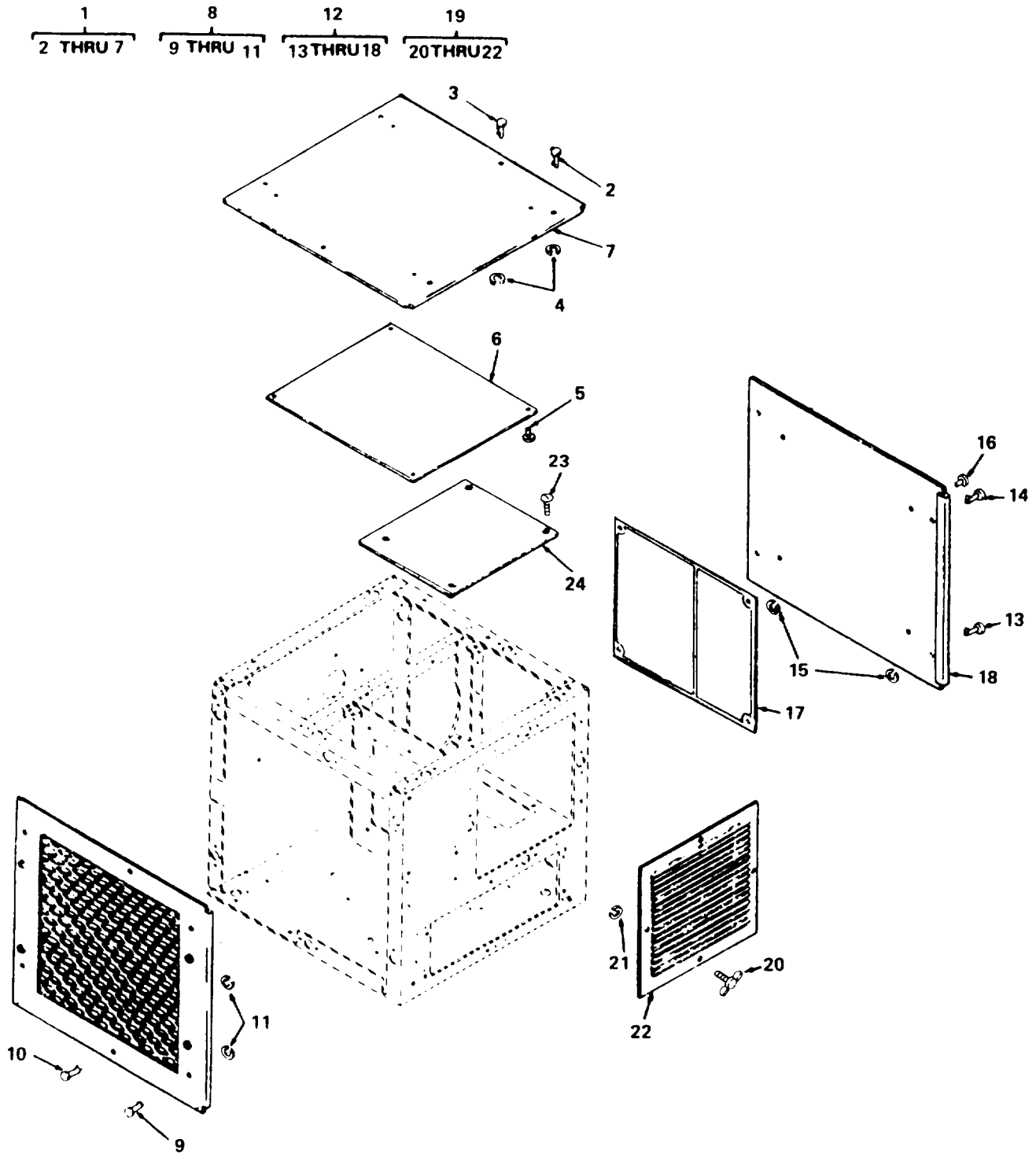
b. When National Stock Number or Part Number Is Known:

(1) **First. Using the Index** of National Stock Numbers and Part Numbers, find the pertinent National Stock Number or Part Number. The NSN index is in National Item Identification Number (NIIN) sequence (see 4a.(1)). The part numbers in the Part Number index are listed in ascending alphanumeric sequence (see 4.b). Both indexes cross-reference you to the illustration figure and item number of the item you are looking for.

(2) **Second. After finding the figure and item number, verify that the item is the one you are looking for, then locate the item number in the repair parts list for the figure.**

7. Abbreviations. Abbreviations used in this manual are listed in MIL-STD-12.

Abbreviations	Explanation	Abbreviations	Explanation
amt	armature	evap	evaporation
assy	assembly	fdfl	fluid flow
bdgh	binding head	hd	head
bsc	basic	math	machine
cntfgl	centrifugal	mfr	manufacture
cond	condenser	mtg	mounting
cent	control	ovld	overload
cprsr	compressor	press	pressure
ctsk	countersunk	rcpt	receptacle
elec	electrical	rnd	round



4786-001

Figure 1. Housing Panels and Louver.

SECTION II		TM5-4520-242-23P			
(1)	(2)	(3)	(4)	(5)	(6)
ITEM NO	SMR CODE	FSCM	PART NUMBER	DESCRIPTION AND USABLE ON CODE (UOC)	QTY
GROUP 01 NOT USED					
GROUP 02 HOUSING PANELS AND LOUVERS					
FIG. 1 HOUSING PANELS AND LOUVERS					
1	XBOZZ	93084	154-211	PANEL ASSEMBLY TOP	1
2	PAOZZ	94222	85-11-100-16	.STUD ASSEMBLY	4
3	XDOZZ	94222	85-11-160-16	.STUD ASSEMBLY	2
4	PAOZZ	94222	85-34-101-20	.WASHER,SPLIT	6
5	PAOZZ	96906	MS16535-153	.RIVET TUBULAR	4
6	XBFZZ	93084	154-137	.PLATE WIRING DIAG	1
7	XBOZZ	93084	154-179	.PANEL TOP	1
8	XBOZZ	93084	154-209	PANEL ASSEMBLY LS	1
9	PAOZZ	94222	85-11-100-16	.STUD ASSEMBLY	4
10	XDOZZ	94222	85-11-160-16	.STUD ASSEMBLY	2
11	PAOZZ	94222	85-34-101-20	.WASHER,SPLIT	6
12	XBOZZ	93084	154-210	PANEL ASSEMBLY RS	1
13	PAOZZ	94222	85-11-100-16	.STUD ASSEMBLY	3
14	XDOZZ	94222	85-11-160-16	.STUD ASSEMBLY	1
15	PAOZZ	94222	85-34-101-20	.WASHER,SPLIT	4
16	PAOZZ	96906	MS16535-153	.RIVET TUBULAR	4
17	XBFZZ	93084	154-193	.PLATE WIRING SCHEM	1
18	XBOZZ	93084	154-180	.PANEL RIGHT SIDE	1
19	XBOZZ	93084	154-212	LOUVER ASSEMBLY	1
20	XBOZZ	93084	154-208	.STUD WING HEAD	4
21	PAOZZ	94222	85-34-101-20	.WASHER,SPLIT	4
22	XBOZZ	93084	154-130	.LOUVER	1
23	PAOZZ	96906	MS35191-273	SCREW MACHINE	4
24	XBOZZ	93084	154-176	COVER COMB CHAMBER	1

END OF FIGURE

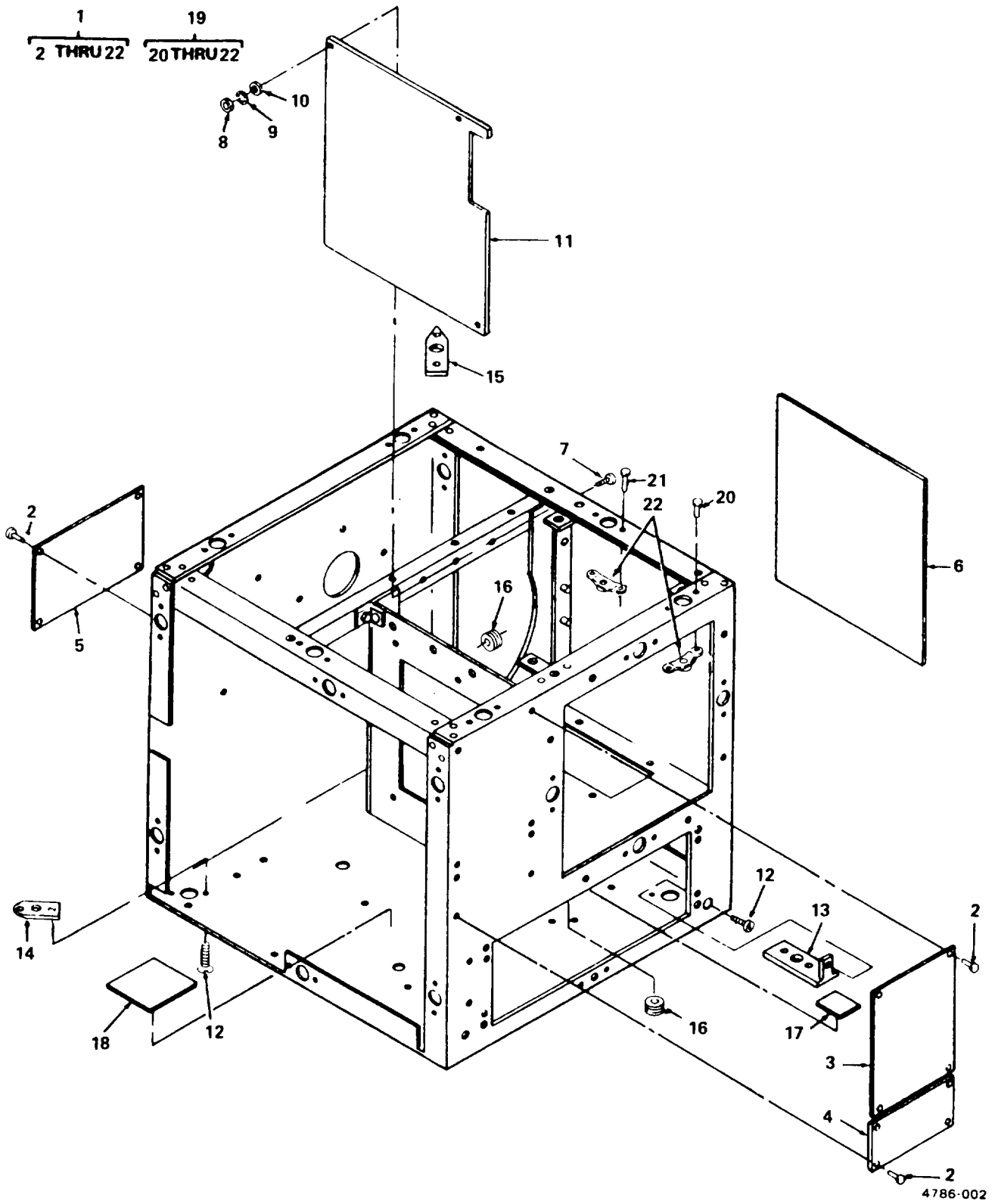


Figure 2. Case Assembly.

SECTION II (1)	ITEM (2)	(3)	TM5-4520-242-23P (4)	(5)	(6)
NO	SMR CODE	FSCM	PART NUMBER	DESCRIPTION AND USABLE ON CODE (UOC)	QTY
GROUP 02 HOUSING PANELS AND LOUVERS					
FIG. 2 CASE ASSEMBLY					
1	XBFZZ	93084	154-271	CASE ASSEMBLY	1
2	PAOZZ	96906	MS16535-153	.RIVET TUBULAR	12
3	XBFZZ	93084	154-141	.PLATE INSTRUCTION	1
4	XBFZZ	93084	154-172	.PLATE WARNING	1
5	XBFZZ	93084	154-140	.PLATE IDENT	1
6	XBFZZ	93084	154-252	.INSULATION OUTSIDE	1
7	PAFZZ	96906	MS35191-273	.SCREW MACHINE	3
8	PAFZZ	96906	MS9881-09	.NUT PLAIN HEX	3
9	PAFZZ	96906	MS35333-39	.WASHER LOCK INTL T	3
10	PAFZZ	88044	AN960-10	.WASHER,FLAT	3
11	XBFZZ	93084	154-250	.INSULATION INSIDE	1
12	PAFZZ	96906	MS35191-269	.SCREW UNDERCUT	10
13	XBFZZ	93084	154-161	.NUT PLATE FRONT	2
14	XBFZZ	93084	154-181	.NUT PLATE LEFT REAR	1
15	XBFZZ	93084	154-182	.NUT PLATE R REAR	1
16	PAFZZ	96906	MS35489-6	.GROMMET, NONMETALLIC	2
17	XBFZZ	93084	154-258	.PAD RUBBER FUEL PMP	2
18	XBFZZ	93084	154-259	.PAD RUBBER CPRSR	1
19	XBFZZ	93084	154-257	.FRAME ASSEMBLY	1
20	PAFZZ	81352	AN450D8AD10	..RIVET TUBULAR	30
21	PAFZZ	96906	MS16535-12	..RIVET TUBULAR	10
22	XBFZZ	94222	85-35-295-15	..RECEPTACLE, TURNLOCK	20

END OF FIGURE

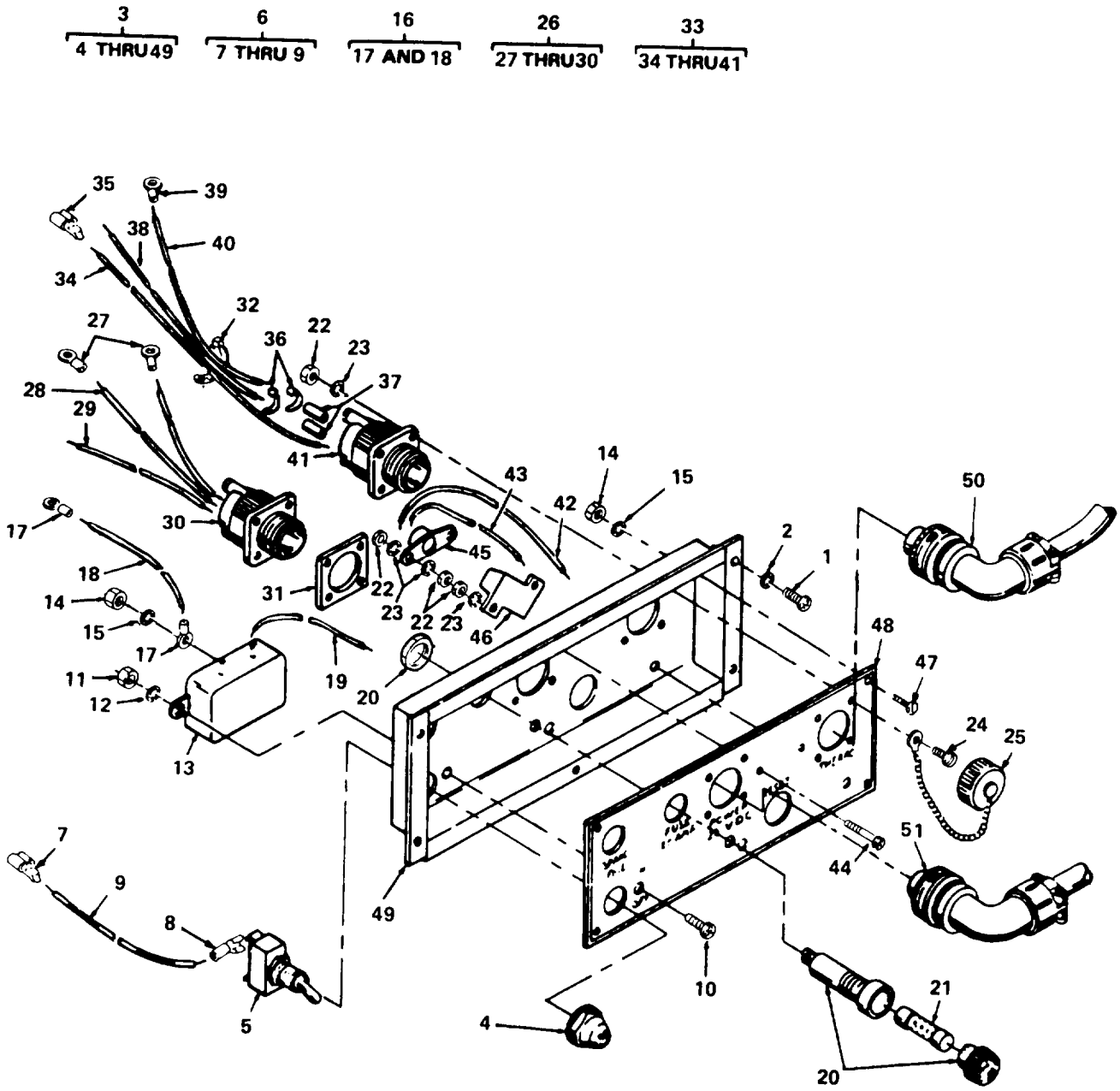
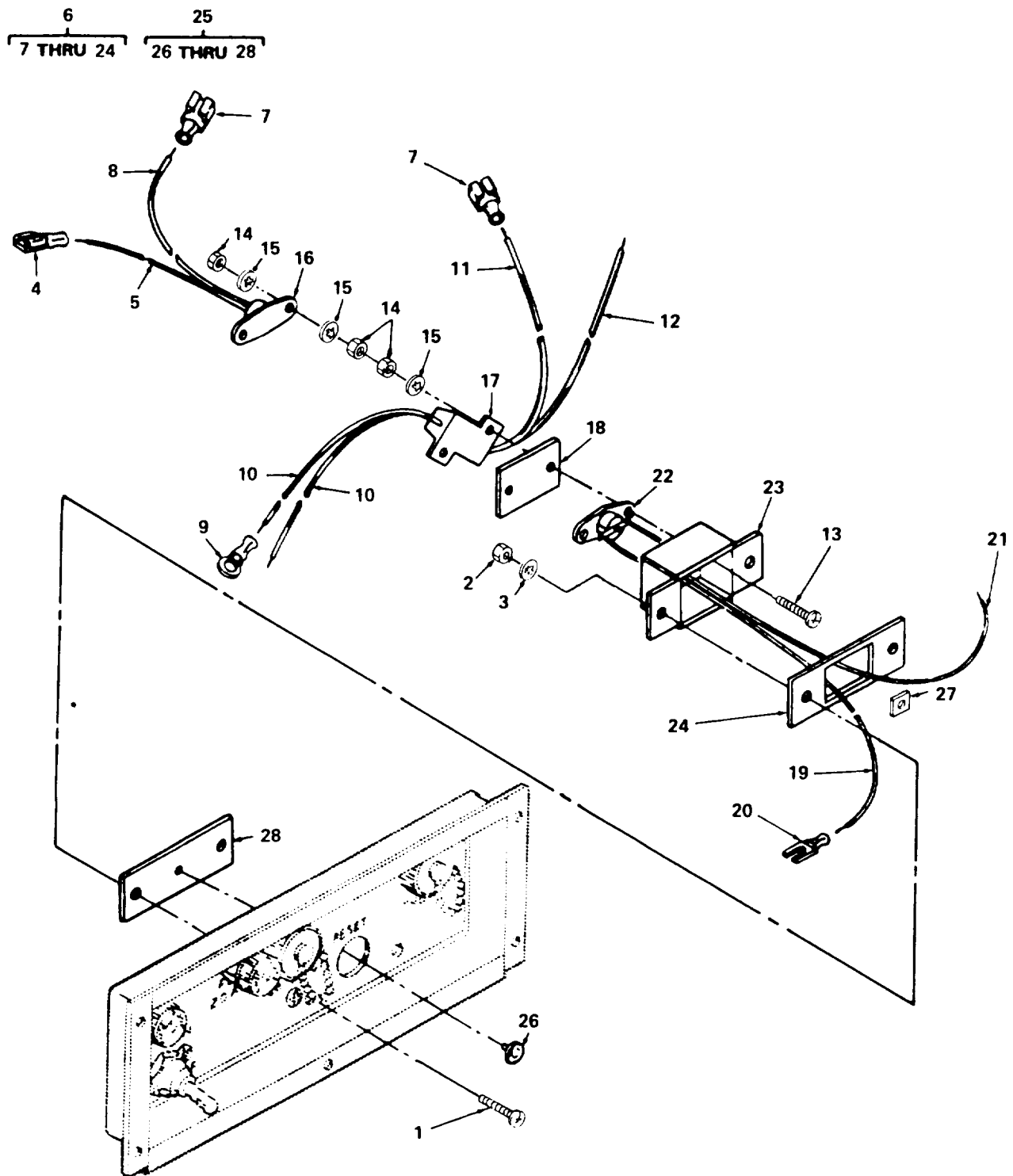


Figure 3. Control Panel.

SECTION II (1) ITEM NO	(2) SMR CODE	(3) FSCM	TM5-4520-242-23P (4) PART NUMBER	(5) DESCRIPTION AND USABLE ON CODE (UOC)	(6) QTY
GROUP 03 ELECTRICAL					
FIG. 3 CONTROL PANEL					
1	PAFZZ	96906	MS35206-245	SCREW MACH PAN HD	5
2	PAFZZ	96906	MS35333-38	WASHER LOCK INTL T	5
3	XBFZZ	93084	154-365	PANEL ASSEMBLY CONT	1
4	PBFZZ	97539	N1030B	.BOOT,DUST AND MOIST	1
5	PAOZZ	96906	MS35058-22	.SWITCH,TOGGLE	1
6	XBFZZ	93084	154-364	.WIRE ASSEMBLY	1
7	PAFZZ	05832	BB8138	..TERMINAL,QUICK DISC	1
8	XBFZZ	05832	A234-06	..CONNECTOR FORK	1
9	MFFZZ	93084	154-343	..WIRE ELECTRIC MAKE FROM ELECTRIC WIRE, P/N MIL-W-16878-1-16-7, 15 IN LG	1
10	PAFZZ	96906	MS35206-228	.SCREW MACHINE	2
11	PAFZZ	96906	MS35649-262	.NUT PLAIN HEX	2
12	PAFZZ	96906	MS35333-37	.WASHER LOCK INTL T	2
13	XBFZZ	93084	7673-1F	.FILTER EMI	1
14	PAFZZ	96906	MS35649-282	.NUT,PLAIN,HEXAGON	5
15	PAFZZ	96906	MS35333-38	.WASHER LOCK INTL T	5
16	XBFZZ	93084	154-363	.WIRE ASSEMBLY	1
17	XBFZZ	05832	A221-10	..TERMINAL EYE	2
18	MFFZZ	93084	154-342	..WIRE ELECTRIC MAKE FROM ELECTRIC WIRE, P/N MIL-W-16878-1-16-90, 18 IN LG	1
19	MFFZZ	93084	154-323	..WIRE ELECTRIC MAKE FROM ELECTRIC WIRE, P/N MIL-W-16878-1-16-2, 3 IN LG	1
20	XBFZZ	75915	342-013AL	.FUSEHOLDER	2
21	XDOZZ	75915	307020	.FUSE,CARTRIDGE	2
22	PAFZZ	96906	MS35649-242	.NUT PLAIN HEX	14
23	PAFZZ	96906	MS35333-36	.WASHER,LOCK	14
24	PAFZZ	96906	MS35206-217	.SCREW MACHINE	8
25	PAFZZ	96906	MS25043-14D	.COVER,ELECTRICAL CO	2
26	XBFZZ	93084	154-282	.RECEPTACLE ASSEMBLY	1
27	XBFZZ	05832	A221-10	..TERMINAL EYE	2
28	MFFZZ	93084	154-320	..WIRE ELECTRIC MAKE FROM ELECTRIC WIRE, P/N MIL-W-16878-1-16-90, 5 IN LG	2
29	MFFZZ	93084	154-323	..WIRE ELECTRIC MAKE FROM ELECTRIC WIRE, P/N MIL-W-16878-1-16-2, 3 IN LG	1
30	PAFZZ	96906	MS3100R14S-7P	..CONNECTOR,RECEPTACL	1
31	XBFZZ	93084	154-296	.INSULATOR RCPT	2
32	XBFZZ	06383	PLTIM-CP	.TIE CABLE	1
33	XBFZZ	93084	154-281	.RECEPTACLE ASSEMBLY	1
34	MFFZZ	93084	154-322	.WIRE ELECTRIC MAKE FROM ELECTRIC WIRE, P/N MIL-W-16878-1-16-7, 8 IN LG	1
35	XBFZZ	05832	A234-06	..CONNECTOR FORK	1
36	XBFZZ	06383	PLTIM-CP	..TIE CABLE	2

SECTION II (1)	ITEM (2)	(3)	TM5-4520-242-23P (4)	(5)	(6)
NO	SMR CODE	FSCM	PART NUMBER	DESCRIPTION AND USABLE ON CODE (UOC)	QTY
37	XDFZZ	78488	57-0053	..SHIELDING BEAD,ELEC	6
38	MFFZZ	93084	154-321	..WIRE ELECTRIC MAKE FROM ELECTRIC WIRE, P/N MIL-W-16878-1-16-4, 4 IN LG	1
39	XBFZZ	05832	A221-10	..TERMINAL EYE	1
40	MFFZZ	93084	154-320	..WIRE ELECTRIC MAKE FROM ELECTRIC WIRE, P/N MIL-W-16878-1-16-90, 5 IN LG	1
41	PAFZZ	96906	MS3100R14S7SX	..CONNECTOR,RECEPTACL	1
42	MFFZZ	93084	154-338	.WIRE ELECTRIC MAKE FROM ELECTRIC WIRE, P/N MIL-W-16878-1-16-2, 4 IN LG	1
43	MFFZZ	93084	154-337	.WIRE ELECTRIC MAKE FROM ELECTRIC WIRE, P/N MIL-W-16878-1-16-6, 2 IN LG	1
44	PAFZZ	96906	MS35206-220	.SCREW MACHINE	2
45	PAFZZ	93084	3100-61-116	.SWITCH,THERMOSTATIC	1
46	PAFZZ	81349	RER70F20R0R	.RESISTOR	1
47	PAFZZ	96906	MS35206-242	.SCREW MACH PAN HEAD	4
48	XBFZZ	93084	154-139	.PLATE CONTROL PANEL	1
49	XBFZZ	93084	154-286	.BOX ASSY CONT PANEL	1
50	PAFZZ	96906	MS3108E14S-7PX	CONNECTOR PLUG,ELEC	1
51	PAFZZ	96906	MS3108B14S7S	CONNECTOR,PLUG,ELEC	1

END OF FIGURE



4786-004

Figure 4. Control Panel, Timer, Reset Assembly.

SECTION II (1) ITEM NO	(2) SMR CODE	(3) FSCM	TM5-4520-242-23P (4) PART NUMBER	(5) DESCRIPTION AND USABLE ON CODE (UOC)	(6) QTY
GROUP 03 ELECTRICAL					
FIG. 4 CONTROL PANEL, TIMER, RESET ASSEMBLY					
1	PAFZZ	96906	MS35206-245	.SCREW MACH PAN HEAD	2
2	PAFZZ	96906	MS35649-282	.NUT PLAIN HEX	2
3	PAFZZ	96906	MS35333-38	.WASHER LOCK INTL T	2
4	XBFZZ	05832	BB8138	.TERMINAL DISCONNECT	1
5	MFFZZ	93084	154-341	.WIRE ELECTRIC MAKE FROM ELECTRIC WIRE, P/N MIL-W-16878-1-16-4, 17 IN LG	1
6	PBFZZ	93084	154-194	.TIMER ASSY	1
7	XBFZZ	05832	BB8138	..TERMINAL DISCONNECT	2
8	MFFZZ	93084	154-317	..WIRE ELECTRIC MAKE FROM ELECTRIC WIRE, P/N MIL-W-16878-1-16-5, 13 IN LG	1
9	XBFZZ	05832	A221-10	..TERMINAL EYE	1
10	MFFZZ	93084	154-318	..WIRE ELECTRIC MAKE FROM ELECTRIC WIRE, P/N MIL-W-16878-1-16-90, 3 IN LG	2
11	MFFZZ	93804	154-319	..WIRE ELECTRIC MAKE FROM ELECTRIC WIRE, P/N MIL-W-16878-1-16-6, 14 IN LG	1
12	MFFZZ	93084	154-309	..WIRE ELECTRIC MAKE FROM ELECTRIC WIRE, P/N MIL-W-16878-1-16-6, 4 IN LG	1
13	PAFZZ	96906	MS35206-220	..SCREW MACHINE	2
14	PAFZZ	96906	MS35649-242	..NUT PLAIN HEX	6
15	PAFZZ	96906	MS35333-36	..WASHER, LOCK	6
16	PAFZZ	93804	3100-45-114	..SWITCH, THERMOSTATIC	1
17	PAFZZ	81349	RER70F20R0R	..RESISTOR	1
18	XBFZZ	93084	154-159	..SHIM RESET SWITCH	1
19	MFFZZ	93084	154-325	..WIRE ELECTRIC MAKE FROM ELECTRIC WIRE, P/N MIL-16878-1-16-2, 6 IN LG.	1
20	XBFZZ	05382	A234-06	..CONNECTOR FORK	1
21	MFFZZ	93084	154-324	..WIRE ELECTRIC MAKE FROM ELECTRIC WIRE, P/N MIL-W-16878-1-16-2, 9 IN LG	1
22	PAFZZ	93084	3455RM77	..THERMOSTAT RESET	1
23	XBFZZ	93084	154-152	..BOX TIMER	1
24	XBFZZ	93084	154-169	.SEAL INNER TIMER	1
25	XBFZZ	93084	154-245	.BUTTON ASSY RESET	1
26	XAFZZ	93084	154-244	..BUTTON RESET	1
27	XAFZZ	93084	154-243	..RETAINER BUTTON	1
28	XAFZZ	93084	154-170	..SEAL OUTER TIMER	1

END OF FIGURE

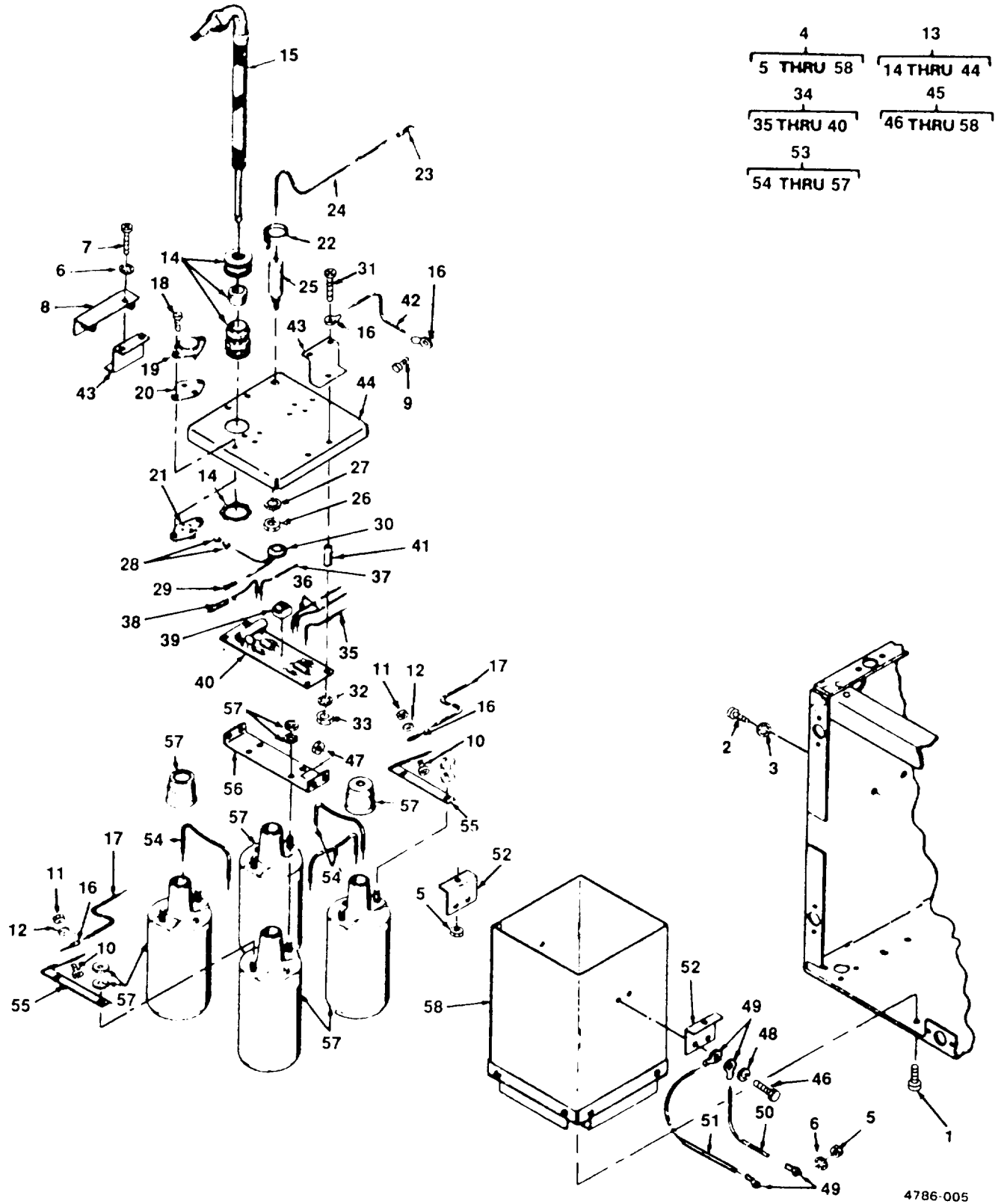


Figure 5. Ignition Power Supply.

SECTION II (1)	ITEM (2)	(3)	TM5-4520-242-23P (4)	C01 (5)	(6)
NO	SMR CODE	FSCM	PART NUMBER	DESCRIPTION AND USABLE ON CODE (UOC)	QTY
GROUP 03 ELECTRICAL					
FIG. 5 IGNITION POWER SUPPLY					
1	PAFZZ	96906	MS35191-274	SCREW MACHINE	4
2	PAFZZ	96906	MS9122-03	SCREW MACH HEX HD	2
3	PAFZZ	96906	MS35333-39	WASHER LOCK INTL T	2
4	XBFZZ	93084	154-295	CASE ASSY IGNITION	1
5	PAFZZ	96906	MS9881-09	.NUT PLAIN HEX	3
6	PAFZZ	96906	MS35333-39	.WASHER LOCK INTL T	3
7	PAFZZ	96906	MS35207-265	.SCREW MACH PAN HEAD	2
8	XBFZZ	93084	154-190	.BRACE IGNITION	1
9	XDFZZ	93084	154-420	.SCREW MACHINE	1
10	PAFZZ	96906	MS35206-242	.SCREW MACH PAN HEAD	2
11	PAFZZ	96906	MS35649-282	.NUT PLAIN HEX	2
12	PAFZZ	96906	MS35333-38	.WASHER LOCK INTL T	2
13	XBOZZ	93084	154-292	.CASE ASSY IGN TOP	1
14	PBFZZ	03743	CG3150	..SHELL,ELECTRICAL CO	1
15	PAFZZ	93084	66670	..CABLE IGNITION	1
16	XBFZZ	05832	A221-10	..TERMINAL EYE	4
17	MFFZZ	93084	154-334	..WIRE ELECTRIC MAKE FROM ELECTRIC WIRE, P/N MIL-W-16878-1-16-6, 3 IN LG	2
18	PAFZZ	96906	MS35206-230	..SCREW MACHINE	4
19	XBFZZ	94991	EGC-251	..TRANSISTOR	2
20	XBFZZ	94991	EGC413	..INSULATOR,STANDOFF	2
21	XBFZZ	94991	EGC209	..SOCKET,PLUG IN,ELEC	2
22	XBFZZ	06383	PLTIM-CP	..TIE,CABLE	1
23	XBFZZ	05832	BB8138	..TERMINAL DISCONNECT	1
24	MFFZZ	93084	154-332	..WIRE ELECTRIC MAKE FROM ELECTRIC WIRE,P/N MIL-W-16878-1-16-4, 15 IN LG	1
25	XBFZZ	56289	103P608	..CAPACITOR,FIXED,PAP	1
26	PAFZZ	96906	MS9361-11	...NUT,PLAIN,HEXAGON	1
27	PAFZZ	96906	MS35333-41	..WASHER,LOCK	1
28	PAFZZ	34899	2643021801	..BEADS FERRITE	2
29	XBFZZ	92219	T2105	..SPLICE,CONDU	1
30	PAFZZ	93084	154-273	..CHOKE EMI	1
31	PAFZZ	96906	MS35206-235	..SCREW MACHINE	4
32	PAFZZ	96906	MS35333-37	..WASHER,LOCK INTL T	4
33	PAFZZ	96906	MS35649-262	..NUT,HEX	4
34	XBFZZ	93084	154-290	..PC BOARD ASSY IGN	1
35	MFFZZ	93084	154-334	...WIRE ELECTRIC,MAKE FROM ELECTRIC WIRE,P/N MIL-W-16878-1-16- 1,3 IN LG	2
36	MFFZZ	93084	154-335	...WIRE ELECTRIC MAKE FROM ELECTRIC WIRE,P/N MIL-W-16878-1-16- 5,2 IN LG	2
37	MFFZZ	93084	154-336	...WIRE ELECTIRC MAKE FROM ELECTRIC WIRE,P/N MIL-W-16878-1-16- 4,2 IN LG	2
38	MFFZZ	93084	154-321	...WIRE ELECTRIC MAKE FROM	1

SECTION II (1)	ITEM (2)	(3)	TM5-4520-242-23P (4)	(5)	(6)
NO	SMR CODE	FSCM	PART NUMBER	DESCRIPTION AND USABLE ON CODE (UOC)	QTY
				ELECTRIC WIRE, P/N MIL-W-16878-1-16-4, 4 IN LG	
39	XDFZZ	18324	SE555CV	..MICROCIRCUIT,LINEAR	1
40	XBFZZ	93084	154-156	..BOARD PC IGNITION	1
41	XBOZZ	93084	154-422	..SPACER	4
42	MFFZZ	93084	154-331	..WIRE ELECTRIC MAKE FROM ELECTRIC WIRE, P/N MIL-W-16878-1-16-90, 2 IN LG	1
43	XBFZZ	93084	154-144	..BRACKET UPPER IGN	2
44	XBFZZ	93084	154-145	..TOP IGNITION CASE	1
45	XBFZZ	93084	154-288	..CASE AND COIL ASSY	1
46	PAFZZ	96906	MS9122-03	..SCREW MACH HEX HD	4
47	PAFZZ	96906	MS9881-09	..NUT PLAIN HEX	4
48	PAFZZ	96906	MS35333-39	..WASHER LOCK INTL T	4
49	XBFZZ	05832	A221-10	..TERMINAL EYE	4
50	MFFZZ	93084	154-330	..WIRE ELECTIRC MAKE FROM ELECTRIC WIRE, P/N MIL-W-W16878-1-16-90, 6 IN LG	1
51	MFFZZ	93084	154-331	..WIRE ELECTRIC MAKE FROM ELECTRIC WIRE, P/N MIL-W-16873-1-16-90, 2 IN LG	1
52	XBFZZ	93084	154-143	..BRACKET LOWER IGN	2
53	XBFZZ	93084	154-287	..COIL ASSY IGNITION	1
54	MFFZZ	93084	154-328	..WIRE ELECTRIC MAKE FROM ELECTRIC WIRE, P/N MIL-W-16878-1-16-2, 8 IN LG	3
55	XBFZZ	93084	154-165	..STRAP POWER IGN	2
56	XBFZZ	93084	154-285	..STRAP GROUND IGN	1
57	XBFZZ	73961	GC202	..COIL IGNITION	4
58	XBFZZ	93084	154-192	..CASE IGNITION	1

END OF FIGURE

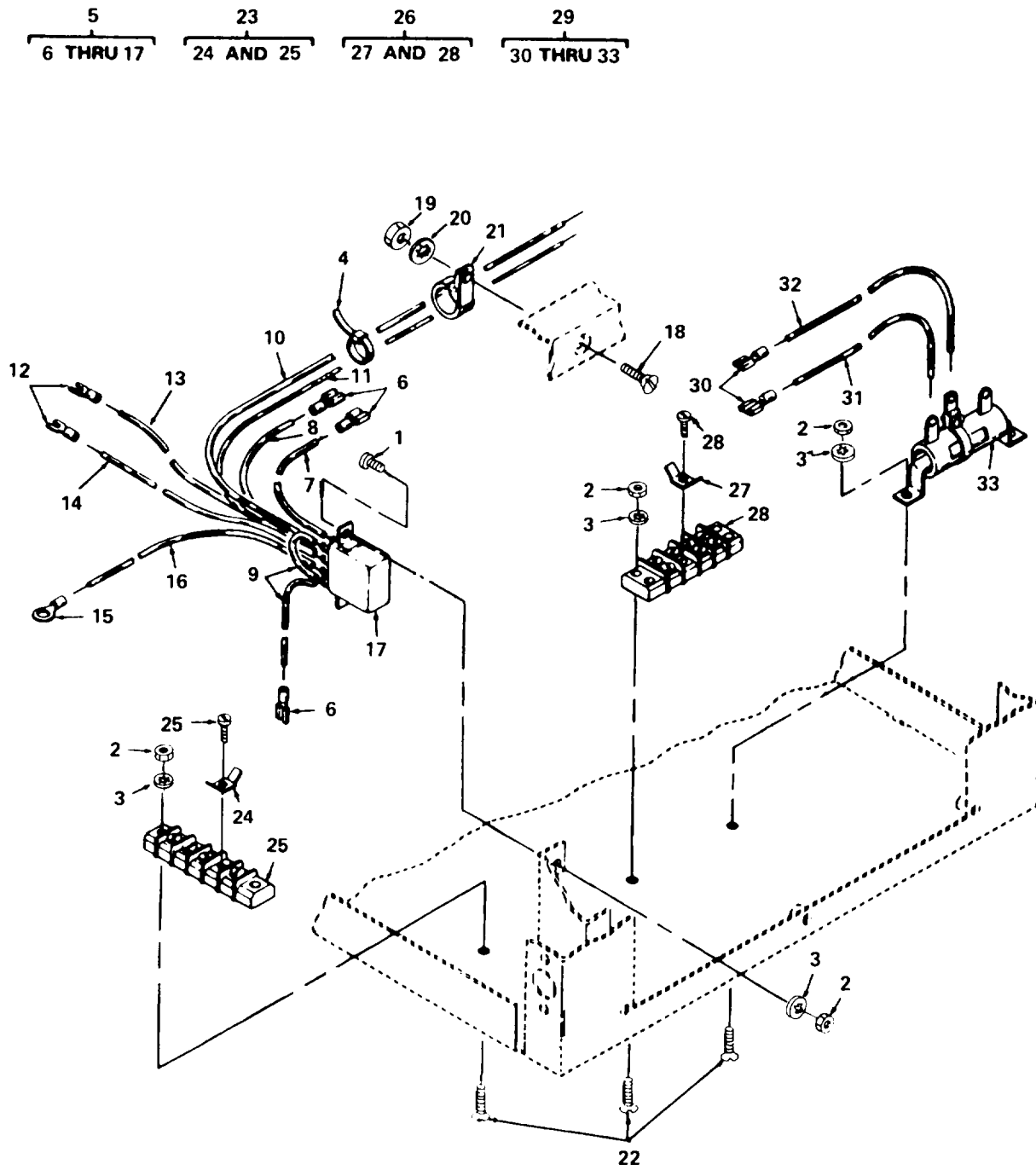
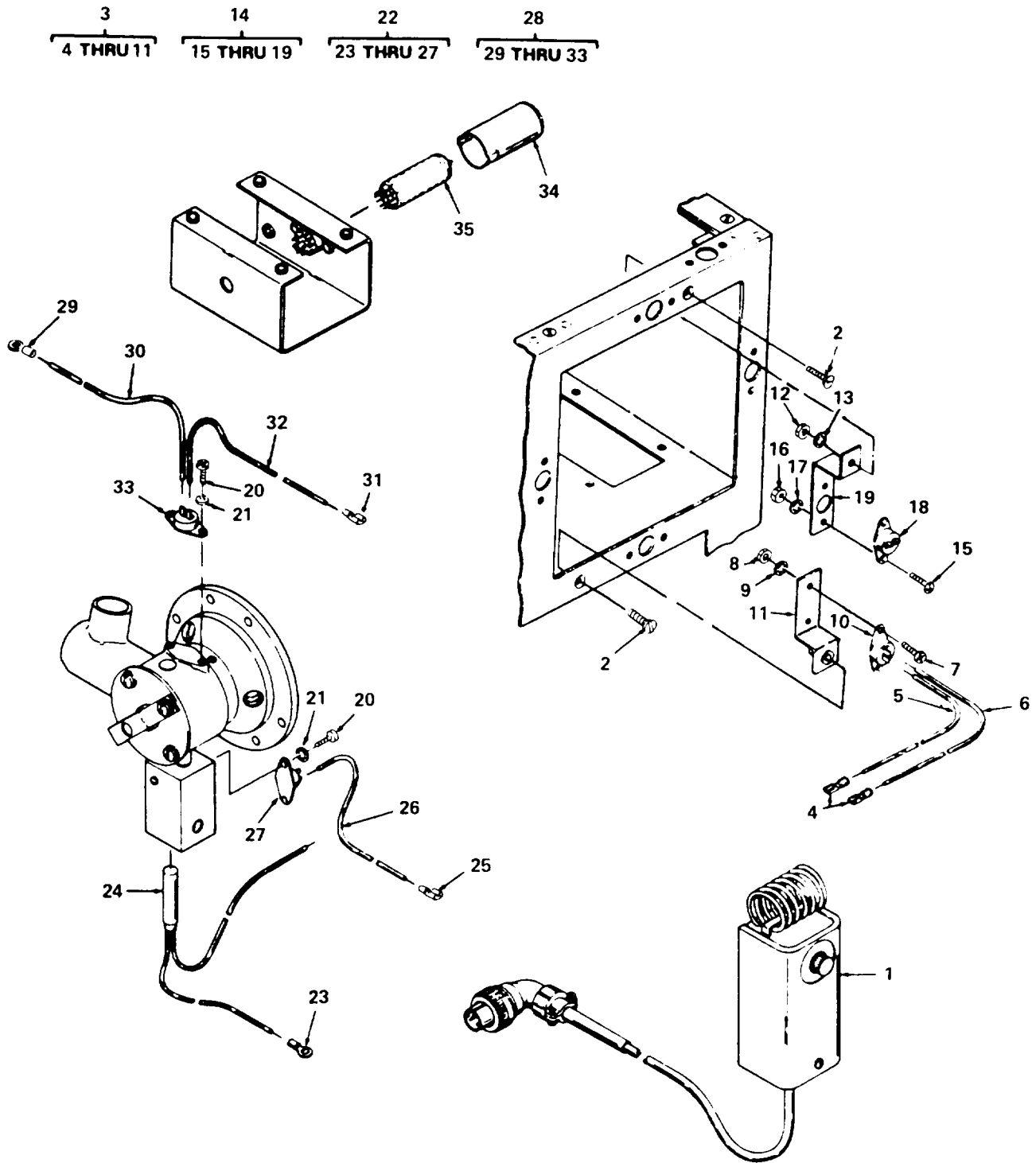


Figure 6. Wiring Terminal Blocks, and Motor Control Resistor.

SECTION II (1) ITEM NO	(2) SMR CODE	(3) FSCM	TM5-4520-242-23P (4) PART NUMBER	(5) DESCRIPTION AND USABLE ON CODE (UOC)	(6) QTY
GROUP 03 ELECTRICAL					
FIG. 6 WIRING TERMINAL BLOCKS, AND MOTOR CONTROL RESISTOR					
1	PAFZZ	96906	MS35206-228	SCREW MACHINE	2
2	PAFZZ	96906	MS35649-262	NUT PLAIN HEX	8
3	PAFZZ	96906	MS35333-37	WASHER LOCK INTL T	8
4	XBFZZ	06383	PLTIM-CP	TIE CABLE	7
5	XBFZZ	93084	154-275	RELAY ASSEMBLY	1
6	XBFZZ	05832	BB8138	.TERMINAL DISCONNECT	3
7	MFFZZ	93084	154-309	.WIRE ELECTRIC MAKE FROM ELECTRIC WIRE, P/N MIL-W-16878-1-16-6, 4 IN LG	1
8	MFFZZ	93084	154-311	.WIRE ELECTRIC MAKE FROM ELECTRIC WIRE, P/N MIL-W-16878-1-16-4, 3 IN LG	1
9	MFFZZ	93084	154-316	.WIRE ELECTRIC MAKE FROM ELECTRIC WIRE, P/N MIL-W-16878-1-16-5, 3 IN LG	2
10	MFFZZ	93084	154-310	.WIRE ELECTRIC MAKE FROM ELECTRIC WIRE, P/N MIL-W-16878-1-18-1, 16 IN LG	1
11	MFFZZ	93084	154-312	.WIRE ELECTRIC MAKE FROM ELECTRIC WIRE, P/N MIL-W-16878-1-18-2, 16 IN LG	1
12	XBFZZ	05832	A234-06	.CONNECTOR FORK	2
13	MFFZZ	93084	154-313	.WIRE ELECTRIC MAKE FROM ELECTRIC WIRE, P/N MIL-W-16878-1-16-2, 15 IN LG	1
14	MFFZZ	93084	154-314	.WIRE ELECTRIC MAKE FROM ELECTRIC WIRE, P/N MIL-W-16878-1-16-8, 8 IN LG	1
15	XBFZZ	05832	A221-10	.TERMINAL EYE	1
16	MFFZZ	93084	154-315	.WIRE ELECTRIC MAKE FROM ELECTRIC WIRE, P/N MIL-W-16878-1-16-90, 8 IN LG	1
17	PAFZZ	96906	MS27245-1	.RELAY, ELECTROMAGNET	1
18	PAFZZ	96906	MS35191-273	SCREW MACHINE	1
19	PAFZZ	96906	MS9881-09	NUT PLAIN HEX	1
20	PAFZZ	96906	MS35333-39	WASHER LOCK INTL T	1
21	XDFZZ	96906	MS21105-3	CLAMP, LOOP	1
22	PAFZZ	96906	MS35190-238	SCREW MACHINE	6
23	XBFZZ	93084	154-299	TERM BLOCK ASSY MN	1
24	XBFZZ	05832	3422	.TAB TERMINAL BLOCK	9
25	XAFZZ	05832	34005-5	.BLOCK TERMINAL	1
26	XBFZZ	93084	154-300	TERM BLOCK ASSY SEC	1
27	XBFZZ	05832	3422	.TAB TERMINAL BLOCK	9
28	XAFZZ	05614	600-4	.BLOCK TERMINAL	1
29	XBFZZ	93084	154-284	RES ASSY MOTOR CONT	1
30	XBFZZ	05832	BB8138	.TERMINAL DISCONNECT	2
31	MFFZZ	93084	154-326	.WIRE ELECTRIC MAKE FROM ELECTRIC	1

SECTION II					
(1)	(2)	(3)	(4)	(5)	(6)
ITEM	SMR		PART		
NO	CODE	FSCM	NUMBER	DESCRIPTION AND USABLE ON CODE (UOC)	QTY
				WIRE, P/N MIL-W-16878-1-16-8, 4 IN LG	
32	MFFZZ	93084	154-327	.WIRE ELECTRIC MAKE FROM ELECTRIC WIRE, P/N MIL-W-16878-1-16-59, 4 IN LG	1
33	PAFZZ	44655	0362	.RESISTOR,ADJUSTABLE	1
END OF FIGURE					

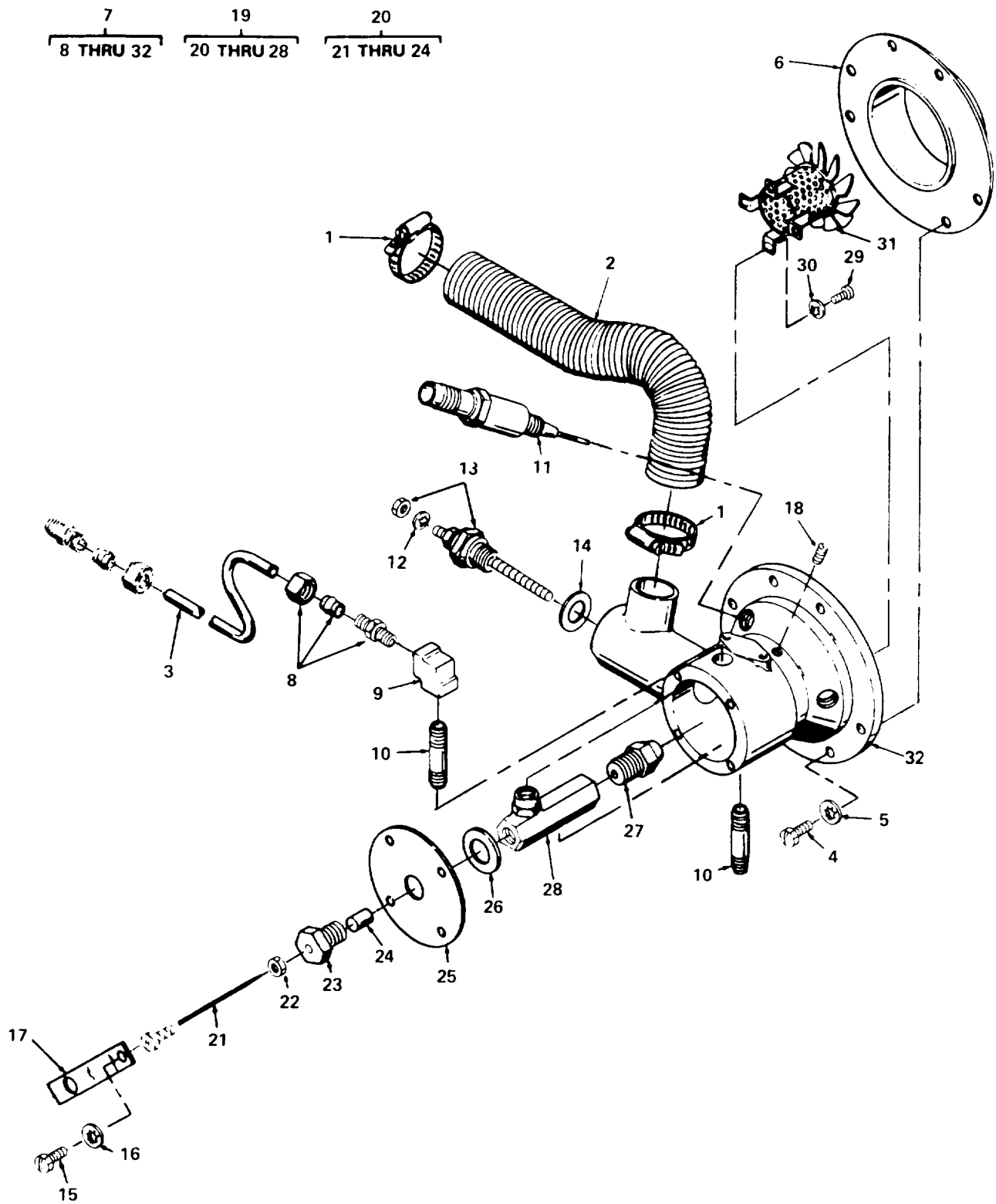


4786-007

Figure 7. Room Thermostat, Thermostat Relays, and Delay Relay.

SECTION II (1) ITEM NO	(2) SMR CODE	(3) FSCM	TM5-4520-242-23P (4) PART NUMBER	(5) DESCRIPTION AND USABLE ON CODE (UOC)	(6) QTY
GROUP 03 ELECTRICAL					
FIG. 7 ROOM THERMOSTAT, THERMOSTAT RELAYS, AND DELAY RELAY					
1	PAOZZ	92578	A19BAB3	CONTROL,TEMPERATURE	1
2	PAFZZ	96906	MS35191-273	SCREW MACHINE	2
3	XBOZZ	93084	154-361	THERMO ASSY OVHT	1
4	XBFZZ	05832	BB8138	.TERMINAL DISCONNECT	2
5	MFFZZ	93084	154-340	.WIRE ELECTRIC MAKE FROM ELECTRIC WIRE, P/N MIL-W-16878-1-16-5, 10 IN LG	1
6	MFFZZ	93084	154-339	.WIRE ELECTRIC MAKE FROM ELECTRIC WIRE, MIL-W-16878-1-16-269, 7 IN LG.	1
7	PAFZZ	96906	MS35206-226	.SCREW MACHINE	2
8	PAFZZ	96906	MS35649-262	.NUT PLAIN HEX	2
9	PAFZZ	96906	MS35333-37	.WASHER LOCK INTL T	2
10	PAFZZ	93084	3100-61-125	.THERMOSTAT OVERHEAT	1
11	XBFZZ	93084	154-168	.BRACKET OVHT THERMO	1
12	PAFZZ	96906	MS9881-09	NUT PLAIN HEX	1
13	PAFZZ	96906	MS35333-39	WASHER LOCK INTL T	1
14	XBOZZ	93084	154-362	THERMO ASSY SAFETY	1
15	PAFZZ	96906	MS35206-226	.SCREW MACHINE	2
16	PAFZZ	96906	MS35649-262	.NUT PLAIN HEX	2
17	PAFZZ	96906	MS35333-37	.WASHER LOCK INTL T	2
18	PAFZZ	93084	3100-61-114	.THERMO FLAME SAFETY	1
19	XBFZZ	93084	154-167	.BRKT SAFETY THERMO	1
20	PAFZZ	96906	MS35206-226	SCREW MACHINE	4
21	PAFZZ	96906	MS35333-37	WASHER LOCK INTL T	4
22	XBFZZ	93084	154-270	CRTG THERMO ASSY	1
23	XBFZZ	05832	A221-10	.TERMINAL EYE	1
24	XDFZZ	93084	HS3715-75W/28VSF 1-10	.CARTRIDGE HEATER	1
25	XBFZZ	05832	BB8138	.TERMINAL DISCONNECT	1
26	MFFZZ	93084	154-306	.WIRE ELECTRIC MAKE FROM ELECTRIC WIRE, P/N MIL-W-16878-1-16-7, 6 IN LG	1
27	PAFZZ	93084	3100-61-116	.SWITCH,THERMOSTATIC	1
28	XBFZZ	93084	154-272	THERMO ASSY GLPG	1
29	XBFZZ	05832	A221-10	.TERMINAL EYE	1
30	MFFZZ	93084	154-306	.WIRE ELEC MAKE FROM ELECTRIC WIRE, P/N MIL-W-16878-1-16-7, 6 IN LG	1
31	XBFZZ	05832	BB8138	.TERMINAL,QUICK DISC	1
32	MFFZZ	93084	154-307	.WIRE ELECTRIC MAKE FROM ELECTRIC WIRE, P/N MIL-W-16878-1-16-7, 11 IN LG	1
33	PAFZZ	93084	3100-61-116	.SWITCH,THERMOSTATIC	1
34	XBFZZ	93084	154-217	SHIELD TUBE	1
35	PAFZZ	70563	26N05T	RELAY,THERMAL	1

END OF FIGURE



4786 008

Figure 8. Burner Assembly.

SECTION II (1)	SMR (2)	FSCM (3)	TM5-4520-242-23P (4) PART NUMBER	(5) DESCRIPTION AND USABLE ON CODE (UOC)	(6) QTY
GROUP 04 BURNER ASSEMBLY					
FIG. 8 BURNER ASSEMBLY					
1	PAOZZ	08484	QS200-16H	CLAMP,HOSE	2
2	PAOZZ	70628	3-1565-8	HOSE,AIR,DUCT	1
3	PAOZZ	93084	154-279	TUBING COMPA	1
4	PAFZZ	96906	MS9122-03	SCREW MACH HEX HD	6
5	PAFZZ	96906	MS35333-39	WASHER LOCK INTL T	6
6	XBFZZ	93084	154-122	CHOKE ASSY BURNER	1
7	XDFZZ	93084	154-255	BURNER ASSEMBLY	1
8	PAOZZ	96906	MS39169-13	.ADAPTER,STRAIGHT,PI	1
9	PAOZZ	79470	3500X2	.ELBOW,PIPE	1
10	PAOZZ	96906	MS51953-6	.NIPPLE,PIPE	2
11	PAOZZ	93084	154-216	.PLUG SPARK	1
12	PAOZZ	96906	MS35333-38	.WASHER LOCK INTL T	1
13	XDOZZ	11583	CH47	.GLOW PLUG	1
14	PAOZZ	11583	N678	.GASKET	1
15	PAOZZ	96906	MS9122-03	.SCREW MACH HEX HD	4
16	PAOZZ	96906	MS35333-39	.WASHER LOCK INTL T	4
17	XBOZZ	93084	154-186	.RETAINER NEEDLE	1
18	PAFZZ	96906	MS51963-37	.SETSCREW HEX SOCKET	2
19	XBFZZ	93084	154-223	.FUEL DELIVERY ASSY.	1
20	XBOZZ	93084	154-221	..NDL ASSY FUEL ADJ	1
21	PAOZZ	93084	154-184	...NEEDLE FUEL ADJ	1
22	PAOZZ	96906	MS35650-305	...NUT PLAIN HEX	1
23	PAOZZ	93084	154-124	...PLUG PIPE	1
24	PAOZZ	93084	154-185	...SEAL NEEDLE	1
25	XBFZZ	93084	154-188	..PLATE BURNER COVER	1
26	PAFZZ	93084	154-189	..GASKET BURNER	1
27	PAFZZ	71895	30609-2	..NOZZLE,SPRAY,FLUID-	1
28	XDFZZ	93084	154-187	..ADAPTER NOZZLE	1
29	PAFZZ	96906	MS35206-226	.SCREW MACHINE	4
30	PAFZZ	96906	MS35333-37	.WASHER LOCK INTL T	4
31	XDFZZ	93084	154-132	.HEAD ASSY BURNER	1
32	XDFZZ	93084	154-131	.BURNER	1

END OF FIGURE

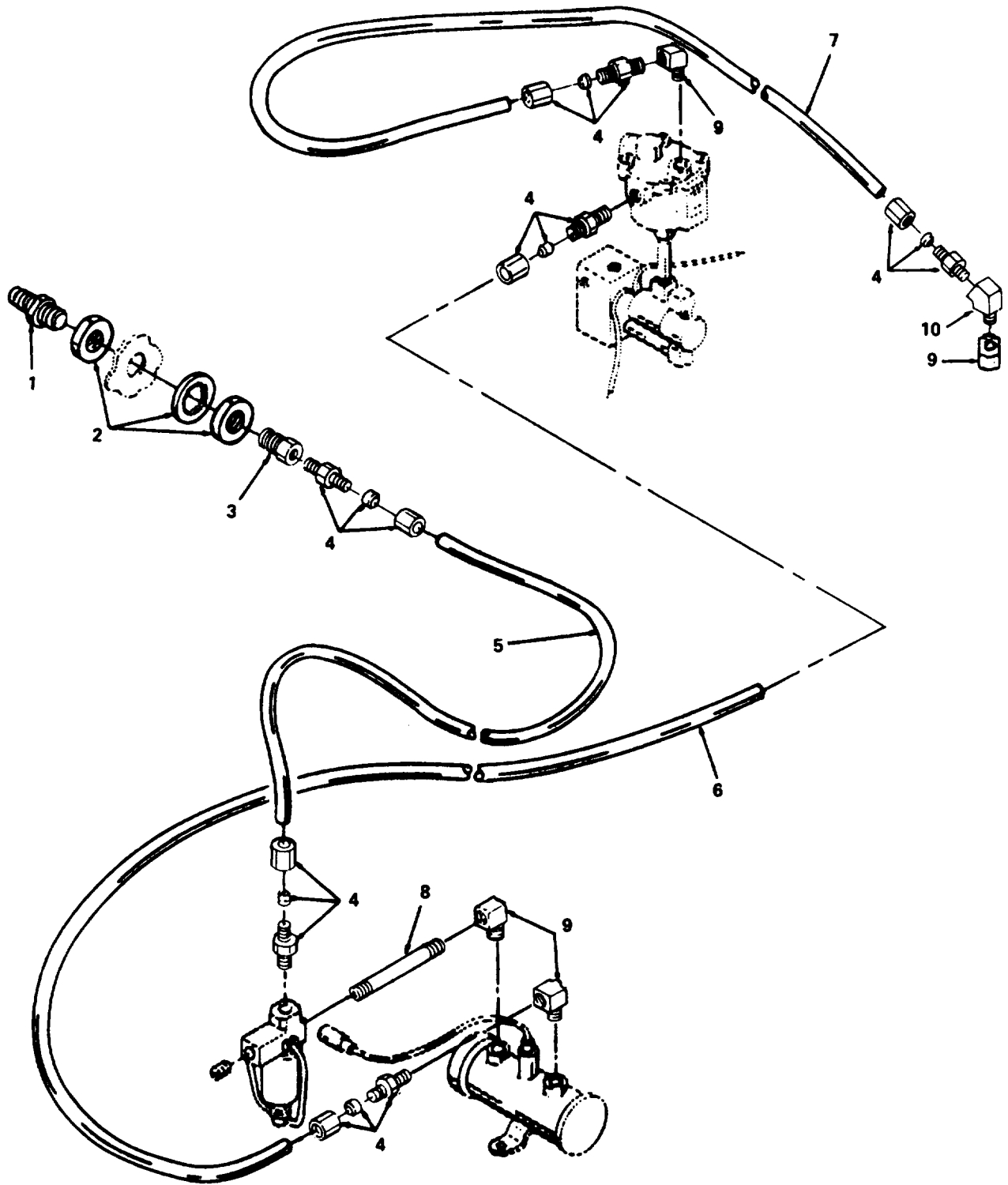


Figure 9. Fuel Tubing and Fittings.

(1) ITEM NO	(2) SMR CODE	(3) FSCM	(4) PART NUMBER	(5) DESCRIPTION AND USABLE ON CODE (UOC)	(6) QTY
GROUP 05 FUEL ASSEMBLY					
FIG. 9 FUEL TUBING AND FITTINGS					
1	PAOZZ	79470	MS35869-22	ADAPTER, STRAIGHT, PI	1
2	PAOZZ	79470	W21204	ADAPTER BUSHING	1
3	XDOZZ	79470	3220X4X2	BUSHING BRASS	1
4	PAOZZ	96906	MS39169-13	ADAPTER, STRAIGHT, PI	6
5	PAOZZ	93084	154-278	TUBING FUEL	1
6	PAOZZ	93084	154-280	TUBING FUEL	1
7	PAOZZ	93084	154-277	TUBING VENT	1
8	PAOZZ	96906	MS51953-6	NIPPLE, PIPE	1
9	PAOZZ	79470	3400X2	ELBOW, PIPE	4
10	PAOZZ	79470	3350X2	ELBOW, PIPE	1

END OF FIGURE

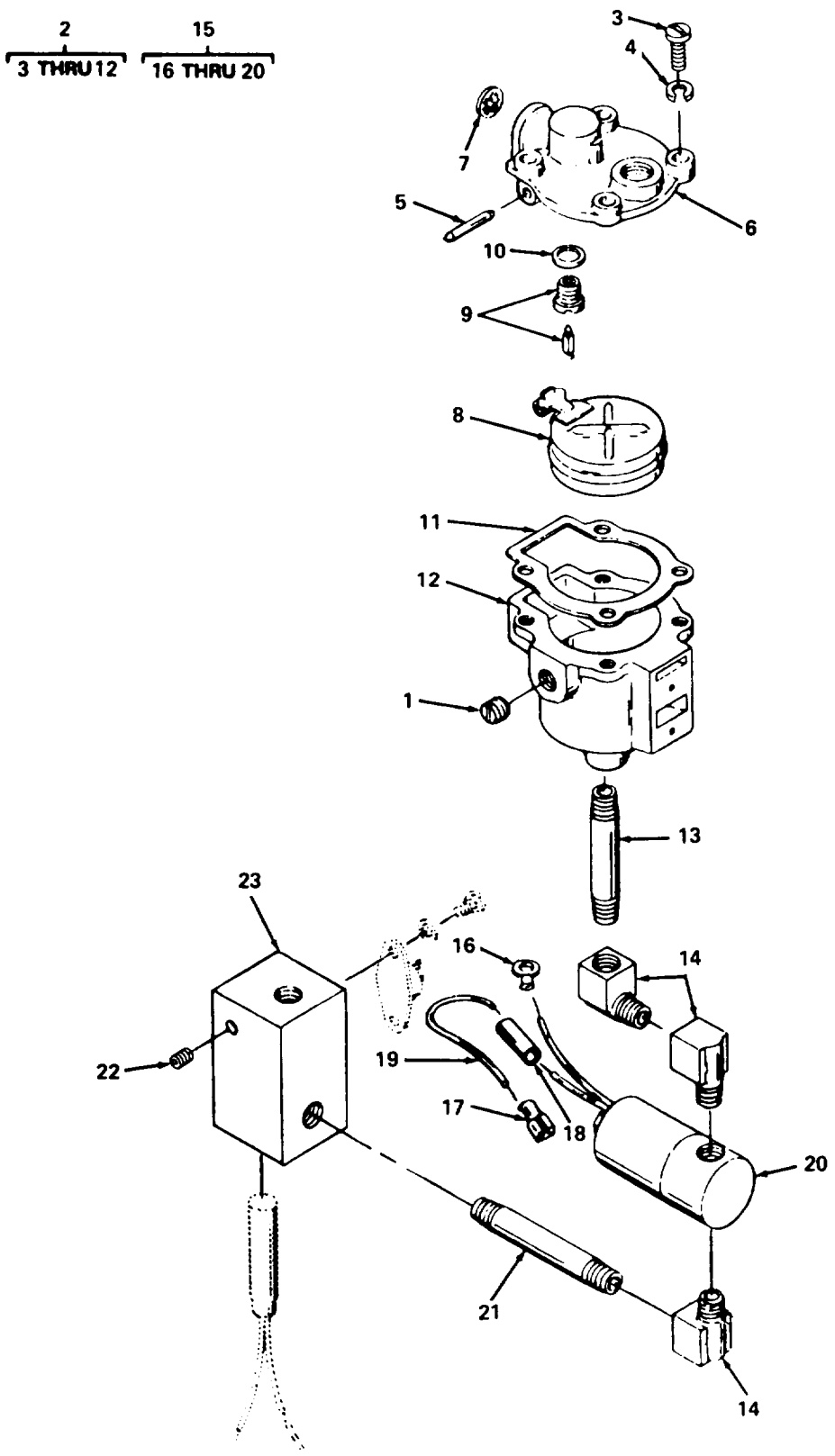


Figure 10. Float Bowl Assembly and Solenoid Valve.

SECTION II (1)	ITEM (2)	(3)	TM5-4520-242-23P (4)	(5)	(6)
NO	SMR CODE	FSCM	PART NUMBER	DESCRIPTION AND USABLE ON CODE (UOC)	QTY
GROUP 05 FUEL SYSTEM					
FIG. 10 FLOAT BOWL ASSEMBLY AND SOLENOID VALVE					
1	XDFZZ	79470	3150X2	.PLUG PIPE	1
2	PAFZZ	96152	013440	.FLOAT, CARBURETOR	1
3	PAFZZ	96906	MS35265-45	..SCREW MACHINE	4
4	PAFZZ	96906	MS35338-42	..WASHER, LOCK	4
5	XBFZZ	96152	0700	..PIN, STRAIGHT, HEADLE	1
6	XAFZZ	96152	013444	..COVER ASSY FLOAT	1
7	XBFZZ	96152	07283	...SCREEN INLET	1
8	XBFZZ	96152	013441	..FLOAT	1
9	XBFZZ	96152	013443	..NEEDLE ASSEMBLY, INL	1
10	XDFZZ	96152	02510	...WASHER, FLAT	1
11	XBFZZ	96152	017259	..GASKET COVER	1
12	XAFZZ	96152	09196	..BOWL FLOAT	1
13	PAFZZ	96906	MS51953-9	.NIPPLE, PIPE	1
14	PAFZZ	79470	3400X2	.ELBOW, PIPE	3
15	PBFZZ	93084	154-269	.SOLENOID VALVE ASSY	1
16	XBFZZ	05832	A221-10	..TERMINAL EYE	1
17	XBFZZ	05832	BB8138	..TERMINAL DISCONNECT	1
18	XBFZZ	92219	T2105	..CONNECTOR PARALLEL	1
19	MFFZZ	93084	154-305	..WIRE ELECTRIC MAKE FROM ELECTRIC WIRE, P/N MIL-W-16878-1-16-3, 2 IN LG	1
20	XBFZZ	51181	M21B1/8 1/8 24DC	..VALVE SOLENOID	1
21	PAFZZ	96906	MS51953-10	.NIPPLE, PIPE	1
22	PAFZZ	96906	MS51964-31	.SETSCREW	1
23	XB0ZZ	93084	154-120	.PREHEATER FUEL	1

END OF FIGURE

2
3 THRU 7

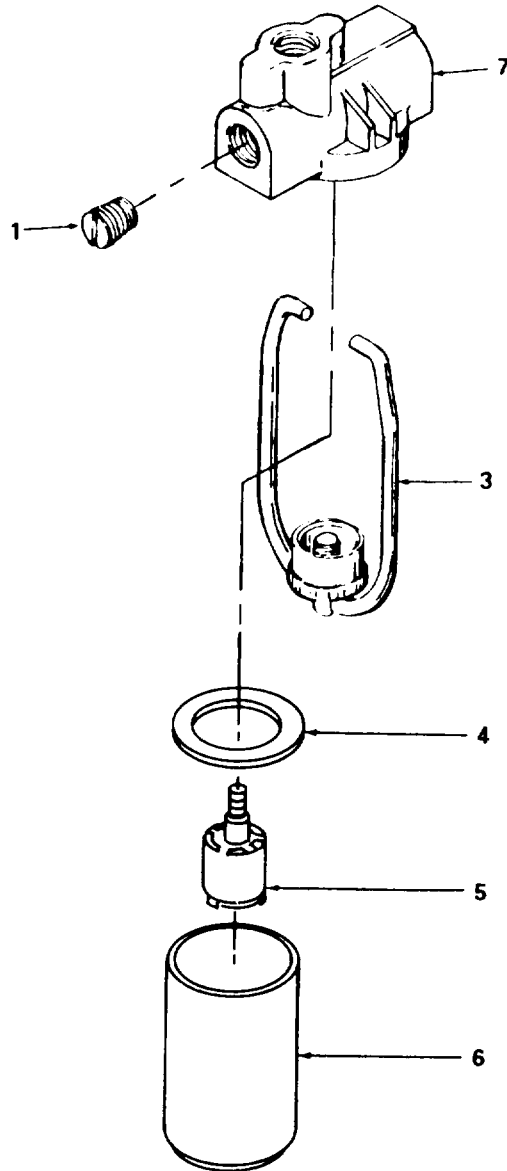


Figure 11. Fuel Filter.

SECTION II					
(1)	(2)	(3)	(4)	(5)	(6)
ITEM NO	SMR CODE	FSCM	PART NUMBER	DESCRIPTION AND USABLE ON CODE (UOC)	QTY
TM5-4520-242-23P					
GROUP 05 FUEL SYSTEM					
FIG. 11 FUEL FILTER					
1	XDFZZ	79470	3150X2	PLUG PIPE	1
2	PAOZZ	96906	MS51086-1	FILTER FUEL	1
3	XBOZZ	79960	F10X3	.BAIL, SEDIMENT BOWL	1
4	XBOZZ	79960	A7413743	.GASKET BOWL	1
5	XBOZZ	79960	F2X79T3	.FILTER ELEMENT, FLUI	1
6	XBOZZ	79960	F8X56	.BOWL	1
7	XAOZZ	79960	F7X184	.HEAD FILTER	1
END OF FIGURE					

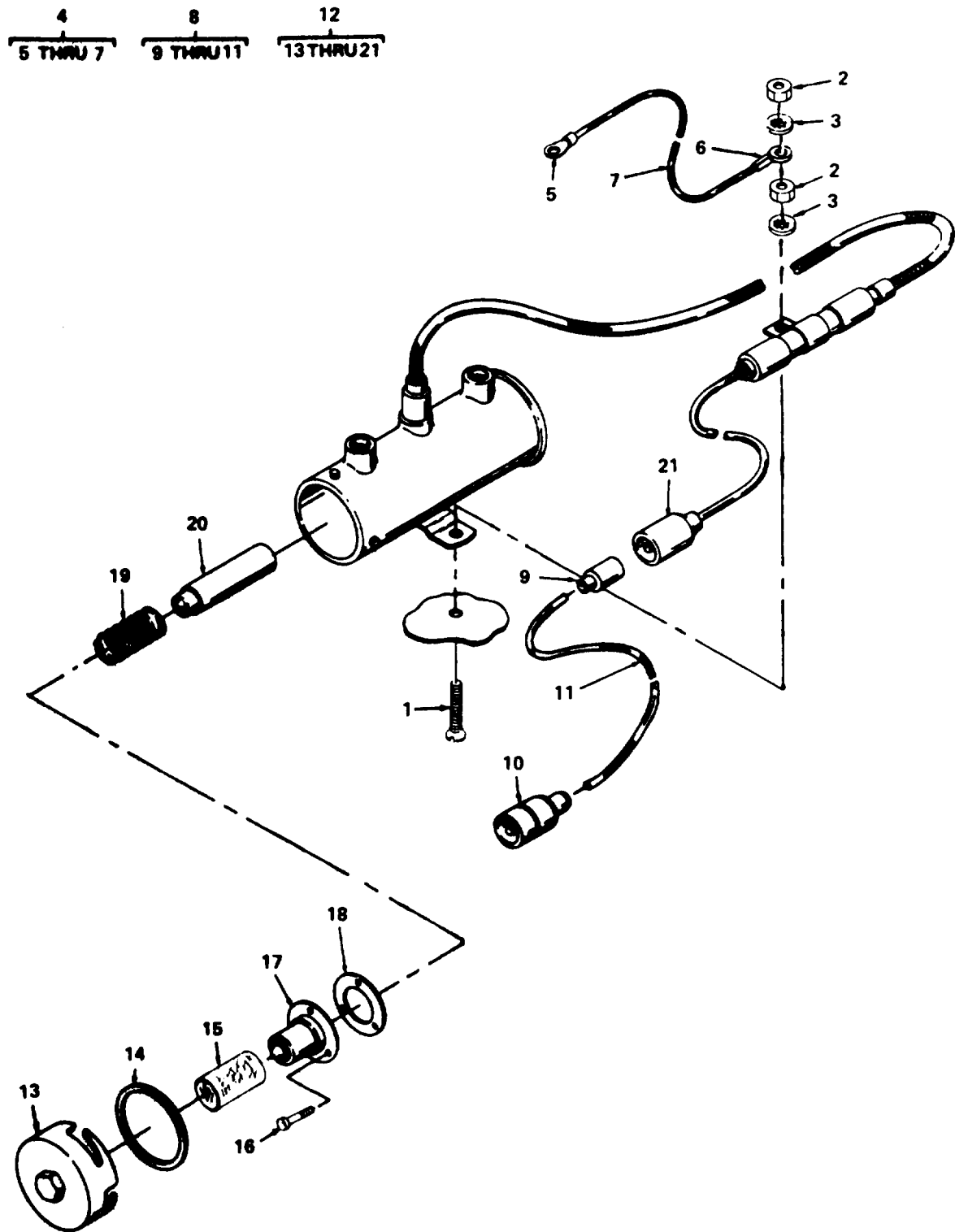
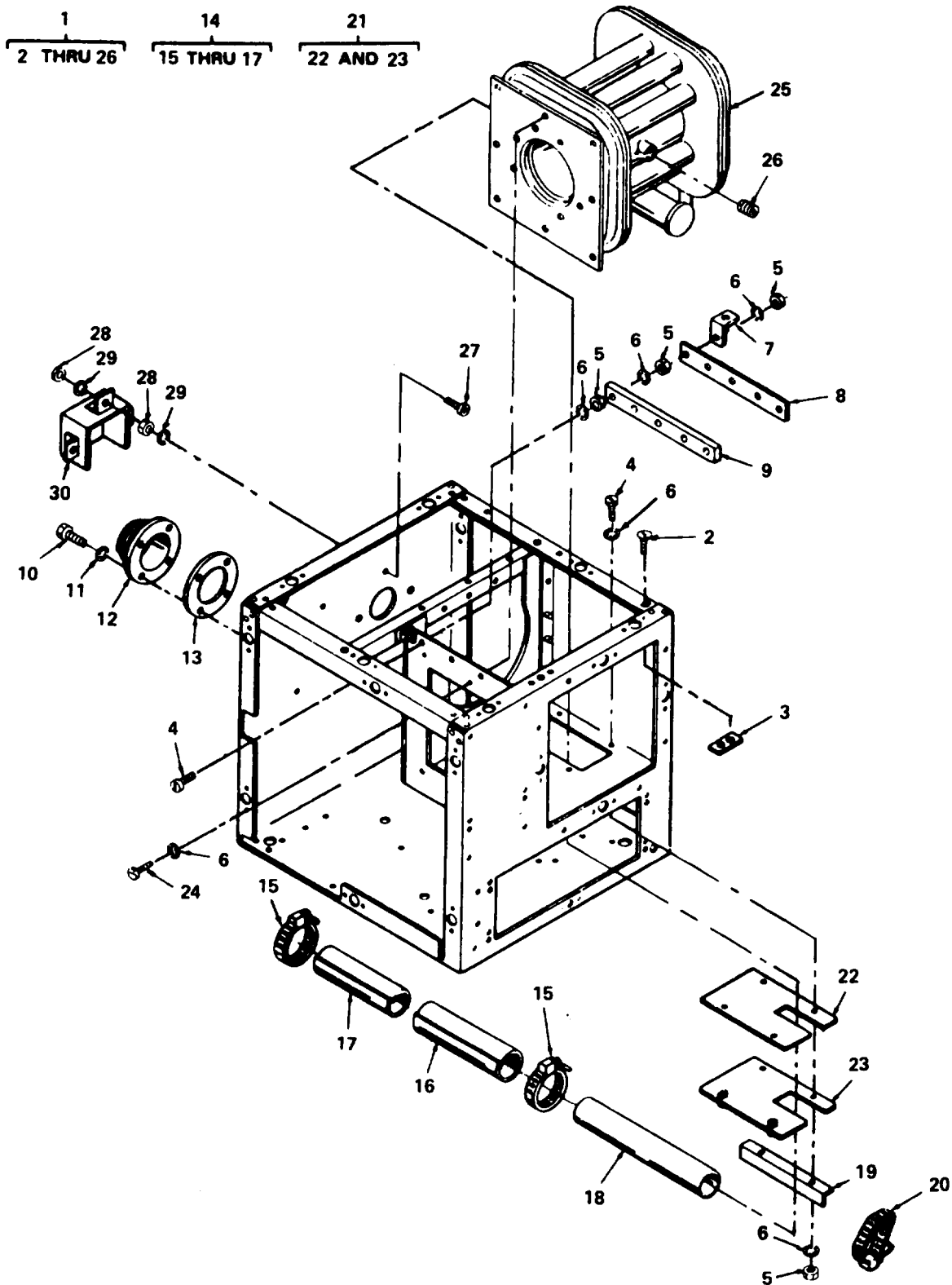


Figure 12. Fuel Pump.

SECTION II (1)	ITEM (2)	(3)	TM5-4520-242-23P (4)	(5)	(6)
NO	SMR CODE	FSCM	PART NUMBER	DESCRIPTION AND USABLE ON CODE (UOC)	QTY
GROUP 05 FUEL SYSTEM					
FIG. 12 FUEL PUMP					
1	PAFZZ	93084	154-265	SCREW FLAT HEAD	2
2	PAFZZ	96906	MS35649-2252	NUT PLAIN HEX	3
3	PAFZZ	96906	MS35333-40	WASHER LOCK INTL T	3
4	XBOZZ	93084	154-297	WIRE ASSEMBLY	1
5	XBFZZ	05832	A221-10	.TERMINAL EYE	1
6	XBFZZ	92219	T2004	.TERMINAL,LUG RING T	1
7	MFFZZ	93084	154-315	.WIRE ELECTRIC MAKE FROM ELECTRIC WIRE, P/N MIL-W-16878-1-16-90, 8 IN LG	1
8	XBFZZ	93084	154-366	WIRE ASSEMBLY	1
9	XBFZZ	05832	BB8138	.TERMINAL DISCONNECT	1
10	PAFZZ	96906	MS27144-1	.CONNECTOR,PLUG,ELEC	1
11	MFFZZ	93084	154-344	.WIRE ELECTRIC MAKE FROM ELECTRIC WIRE, P/N MIL-W-16878-1-16-8, 8 IN LG	1
12	PAFZZ	96906	MS51321-1	PUMP,FUEL,ELECTRICA	1
13	XBOZZ	72850	476563	.COVER AND GASKET	1
14	PAFZZ	72850	475594	.GASKET	1
15	XDOZZ	72850	475634	.FILTER ELEMENT,FLUI	1
16	XBFZZ	72850	490028	.SCREW	3
17	XBFZZ	72850	476364	.CUP SPRING	1
18	XBFZZ	72850	475126	.GASKET	1
19	XDFZZ	72850	475127	.SPRING,HELICAL,COMP	1
20	XAFZZ	72850	476474	.PLUNGER ASSEMBLY	1
21	XBFZZ	00000	7762624	.CONNECTOR	1
END OF FIGURE					



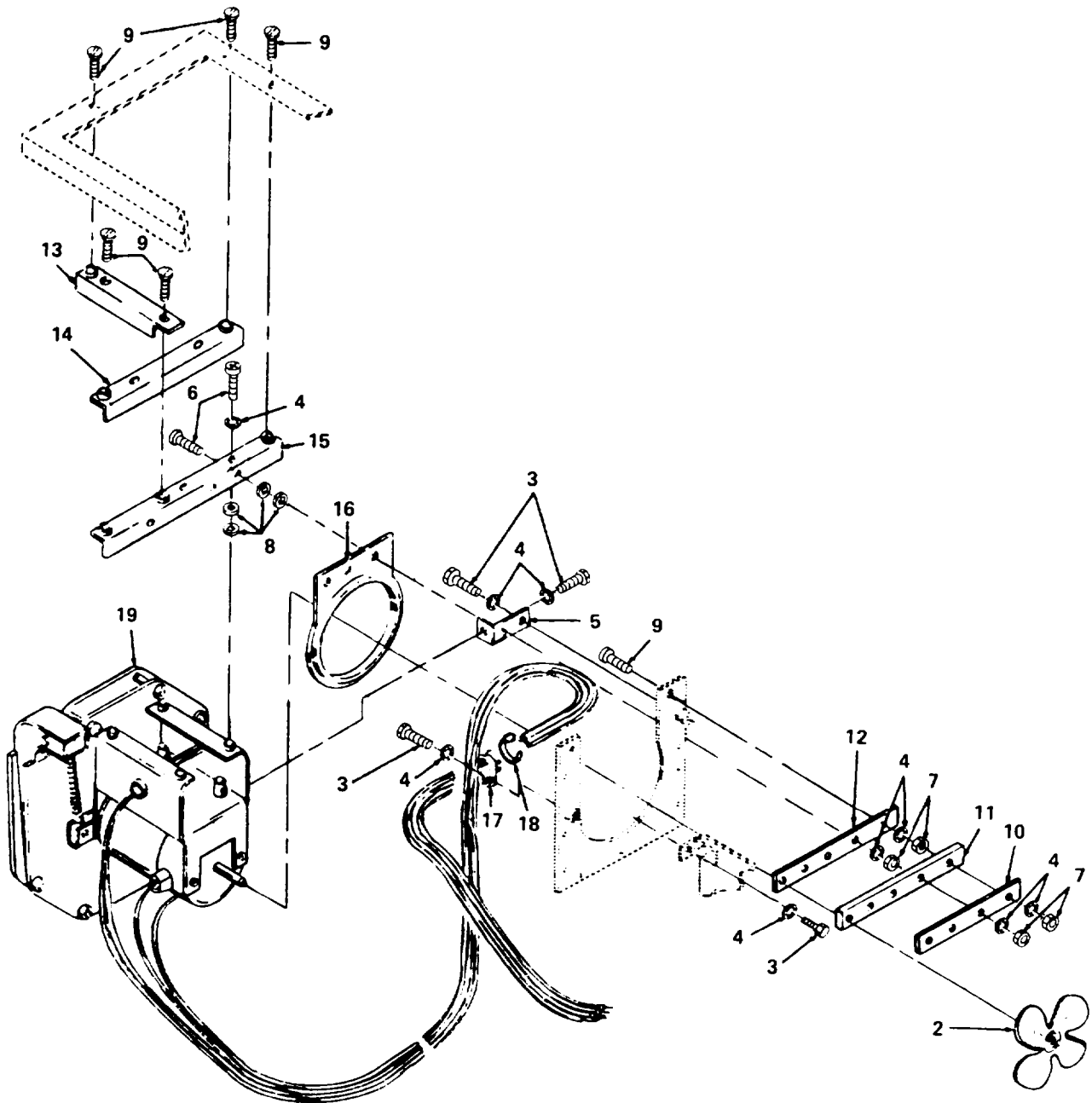
4786-013

Figure 13. Heat Exchanger and Rainshield

SECTION II (1)	ITEM (2)	(3)	TM5-4520-242-23P (4)	(5)	(6)
NO	SMR CODE	FSCM	PART NUMBER	DESCRIPTION AND USABLE ON CODE (UOC)	QTY
GROUP 06 HEAT EXCHANGER					
FIG. 13 HEAT EXCHANGER AND RAINSIELD					
1	XBFZZ	93084	154-367	EXCHANGER HEAT	1
2	PAFZZ	96906	MS35191-273	.SCREW MACHINE	3
3	XBFZZ	93084	154-177	.CLIP RETAINER	3
4	PAFZZ	96906	MS9122-05	.SCREW,MACHINE	8
5	PAFZZ	96906	MS9881-09	.NUT PLAIN HEX	10
6	PAFZZ	96906	MS35333-39	.WASHER LOCK INTL T	22
7	XBFZZ	93084	154-178	.CLIP BENT RETAINER	1
8	XBFZZ	93084	154-164	.BAR SEAL RETAINER	1
9	XBFZZ	93084	154-264	.SEAL LEFT SIDE	1
10	PAFZZ	96906	MS35206-277	.SCREW MACHINE	4
11	PAFZZ	96906	MS35333-40	.WASHER LOCK INTL T	4
12	PBFZZ	93084	154-118	.FITTING EXHAUST	1
13	PAFZZ	93084	154-360	.INSULATION EXHAUST	1
14	XBFZZ	93084	154-205	.EXHAUST PIPE ASSY	1
15	PAFZZ	08484	QS200-32H	..CLAMP,HOSE	1
16	XBFZZ	93084	154-203	..INSUL EXH PIPE COV	1
17	XBFZZ	93084	154-204	..INSUL EXHAUST PIPE	1
18	XDFZZ	93084	154-119	.PIPE,EXHAUST	1
19	XBFZZ	93084	154-163	.SUPPORT EXCHANGER	1
20	PAFZZ	08484	QS200-32H	.CLAMP,HOSE	2
21	XDFZZ	93084	154-199	.SEAL ASSEMBLY,INSUL	1
22	XDFZZ	93084	154-198	..INSUL SEAL EXHAUST	1
23	XDFZZ	93084	154-142	..SEAL,CHAMBER HOUSIN	1
24	XDFZZ	93084	154-421	.SCREW MACHINE	8
25	XBFZZ	93084	154-117	.BUNDLE ASSY TUBE	1
26	PAFZZ	93084	154-424	..PLUG PIPE	1
27	PAFZZ	96906	MS35206-245	SCREW MACH PAN HEAD	3
28	PAFZZ	96906	MS35649-282	NUT PLAIN HEX	6
29	PAFZZ	96906	MS35333-38	WASHER LOCK INTL T	6
30	XBFZZ	93084	154-256	SHIELD ASSY RAIN	1

END OF FIGURE

1
2 THRU 19



4786-014

Figure 14. Blower Support Assembly, Blower Motor.

SECTION II		TM5-4520-242-23P			
(1)	(2)	(3)	(4)	(5)	(6)
ITEM NO	SMR CODE	FSCM	PART NUMBER	DESCRIPTION AND USABLE ON CODE (UOC)	QTY
GROUP 07 BLOWER ASSEMBLY					
FIG. 14 BLOWER SUPPORT ASSEMBLY, BLOWER MOTOR					
1	XAFZZ	93084	154-298	SPRT ASSY BLO MOTOR	1
2	XDFZZ	60399	0-5520-4	.IMPELLER, FAN, AXIAL	1
3	PAFZZ	96906	MS9122-05	.SCREW, MACHINE	4
4	PAFZZ	96906	MS35333-39	.WASHER LOCK INTL T	18
5	XBFZZ	93084	154-191	.STABILIZER BLO MOT	1
6	PAFZZ	96906	MS35207-265	.SCREW MACH PAN HEAD	6
7	PAFZZ	96906	MS9881-09	.NUT PLAIN HEX	10
8	PAFZZ	88044	AN960-10	.WASHER, FLAT	12
9	PAFZZ	96906	MS35191-273	.SCREW MACHINE	9
10	XBFZZ	93084	154-164	.BAR SEAL RETAINER	1
11	XBFZZ	93084	154-263	.SEAL BACK SIDE	1
12	XBFZZ	93084	154-240	.BAR TIE	1
13	XBFZZ	93084	154-239	.BRIDGE SUPPORT	1
14	XBFZZ	93084	154-238	.BRACKET BACK SPRT	1
15	XBFZZ	93084	154-175	.STIFFENER CTR SPRT	1
16	XBFZZ	93084	154-268	.SHROUD ASSY FAN	1
17	XDFZZ	96906	MS21919H3	.CLAMP, LOOP	1
18	XBFZZ	06383	PLTIM-CP	.TIE CABLE	1
19	XDFZZ	93084	154-274	.BLOWER ASSY MOTOR	1

END OF FIGURE

5
6 THRU 23

9
10 THRU 16

17
18 THRU 23

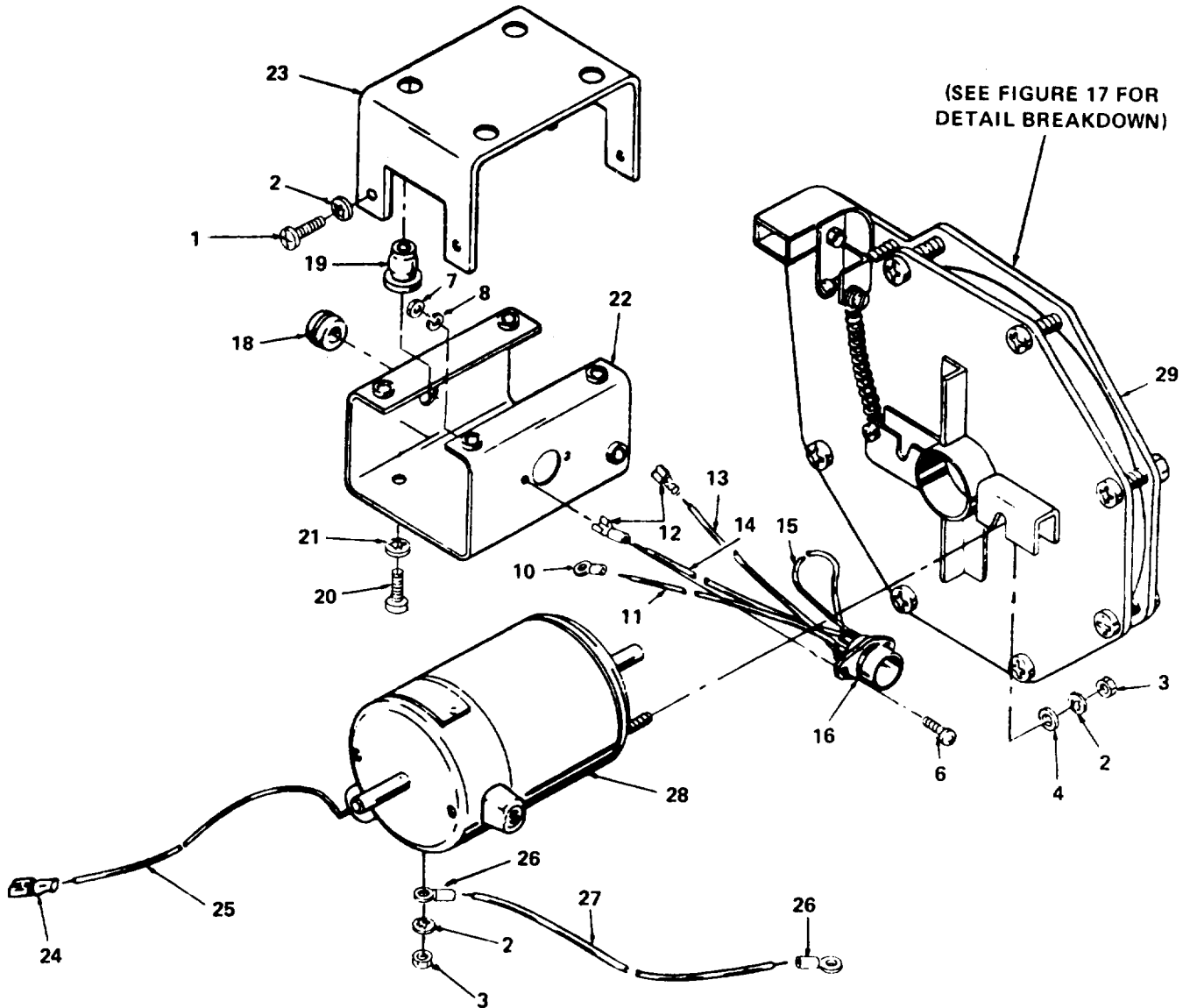
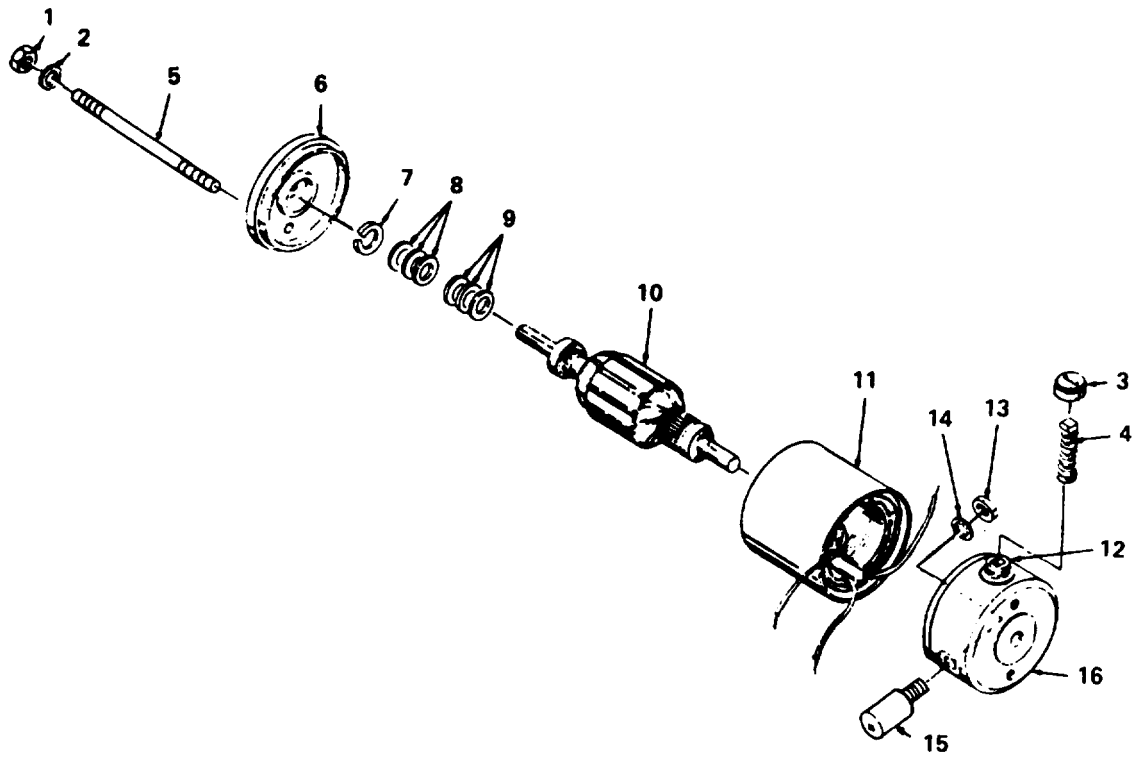


Figure 15. Blower Assembly, Motor.

SECTION II (1)	ITEM (2)	(3)	TM5-4520-242-23P (4)	(5)	(6)
NO	SMR CODE	FSCM	PART NUMBER	DESCRIPTION AND USABLE ON CODE (UOC)	QTY
GROUP 07 BLOWER ASSEMBLY					
FIG. 15 BLOWER ASSEMBLY, MOTOR					
1	PAFZZ	96906	MS35206-242	..SCREW MACHINE	2
2	PAFZZ	96906	MS35333-38	..WASHER LOCK INTL T	5
3	PAFZZ	96906	MS35649-282	..NUT PLAIN HEX	3
4	PAFZZ	88044	AN960-8	..WASHER,FLAT	2
5	XBFZZ	93084	154-267	..SUPPORT ASSY MOT	1
6	PAFZZ	96906	MS35206-214	...SCREW MACHINE	2
7	PAFZZ	96906	MS35649-242	...NUT PLAIN HEX	2
8	PAFZZ	96906	MS35333-36	...WASHER,LOCK	2
9	XBFZZ	93084	154-261	...SOCKET ASSY TUBE	1
10	XBFZZ	05832	A221-10TERMINAL EYE	1
11	MFFZZ	93084	154-302WIRE ELECTRIC MAKE FROM ELECTRIC WIRE, P/N MIL-W-16878-1-16- 90, 12 IN LG	1
12	XBFZZ	05832	BB8138TERMINAL DISCONNECT	2
13	MFFZZ	93084	154-303	...WIRE ELECTRIC MAKE FROM ELECTRIC WIRE, P/N MIL-W-16878-1-16- 3, 17 IN LG	1
14	MFFZZ	93084	154-304	...WIRE ELECTRIC MAKE FROM ELECTRIC WIRE, P/N MIL-W-16878-1-16- 269, 17 IN LG	1
15	MFFZZ	93084	154-301	...WIRE ELECTRIC MAKE FROM ELECTRIC WIRE, P/N MIL-W-16878-1-16- 269, 2 IN LG	1
16	XBFZZ	70563	9JM2SOCKET TUBE	1
17	XBFZZ	93084	154-260	...SPRT ASSY BLO MOTOR	1
18	PAFZZ	96906	MS35489-6GROMMET,NONMETALLIC	1
19	PBFZZ	00613	D1420INSERT,SCREW THREAD	4
20	PAFZZ	96906	MS35206-283	...SCREW MACHINE	4
21	PAFZZ	96906	MS35333-40	...WASHER LOCK INTL T	4
22	XBFZZ	93084	154-150SUPPORT UPPER	1
23	XBFZZ	93084	154-151	...SUPPORT LOWER	1
24	XBFZZ	05832	BB8138	..TERMINAL DISCONNECT	1
25	MFFZZ	93084	154-308	..WIRE ELECTRIC MAKE FROM ELECTRIC WIRE, P/N MIL-W-16878-1-16-59, 19 IN LG	1
26	XBFZZ	05832	A221-10	..TERMINAL EYE	2
27	MFFZZ	93084	154-302	..WIRE ELECTRIC MAKE FROM ELECTRIC WIRE, P/N MIL-W-16878-1-16-90, 12 IN LG	1
28	PAFZF	62119	YZ1U026K	..MOTOR ELECTRIC	1
29	XBFZZ	93084	154-129	..HOUSING ASSY BLOWER	1

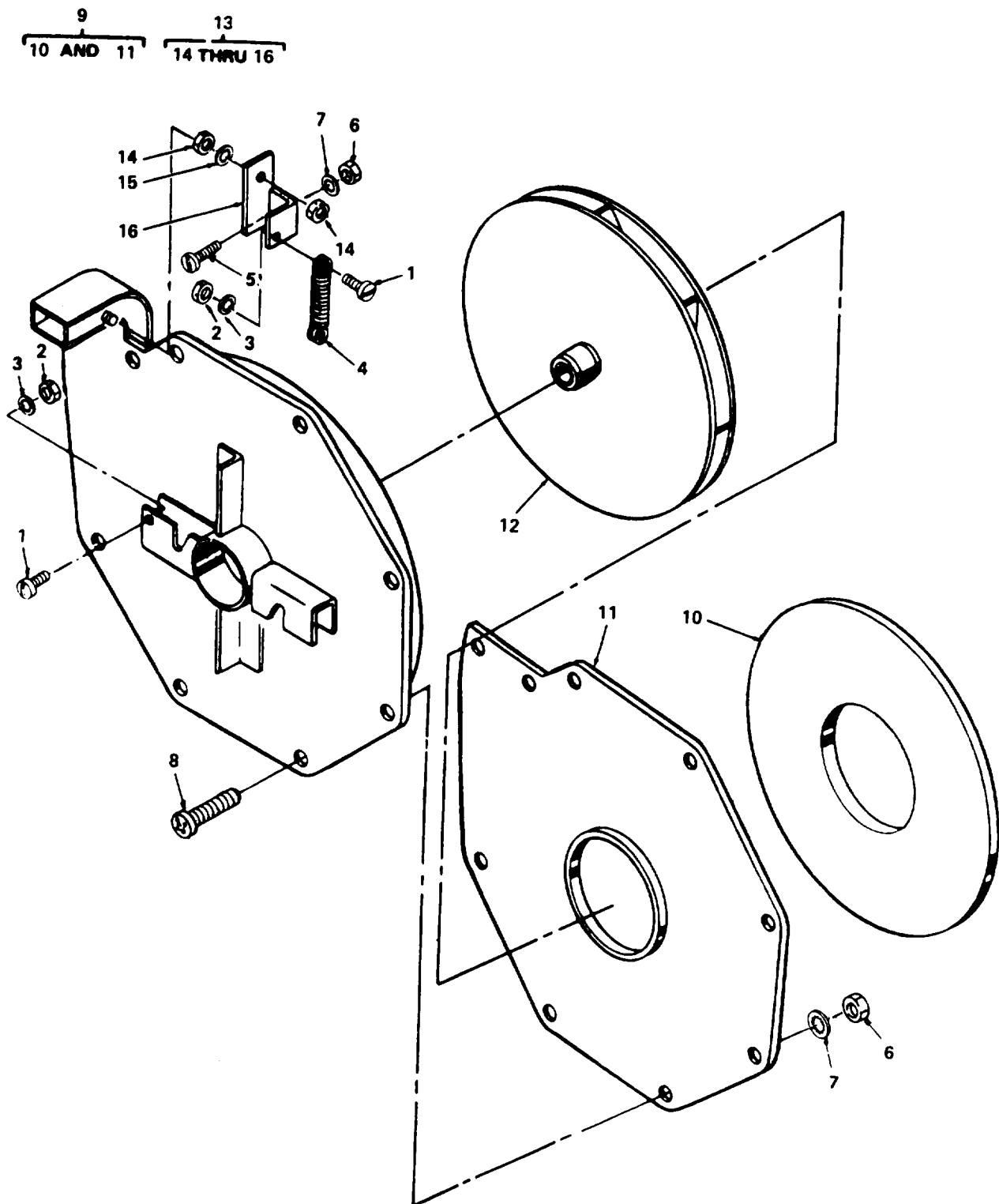
END OF FIGURE



4786-016

Figure 16. Motor, Blower.

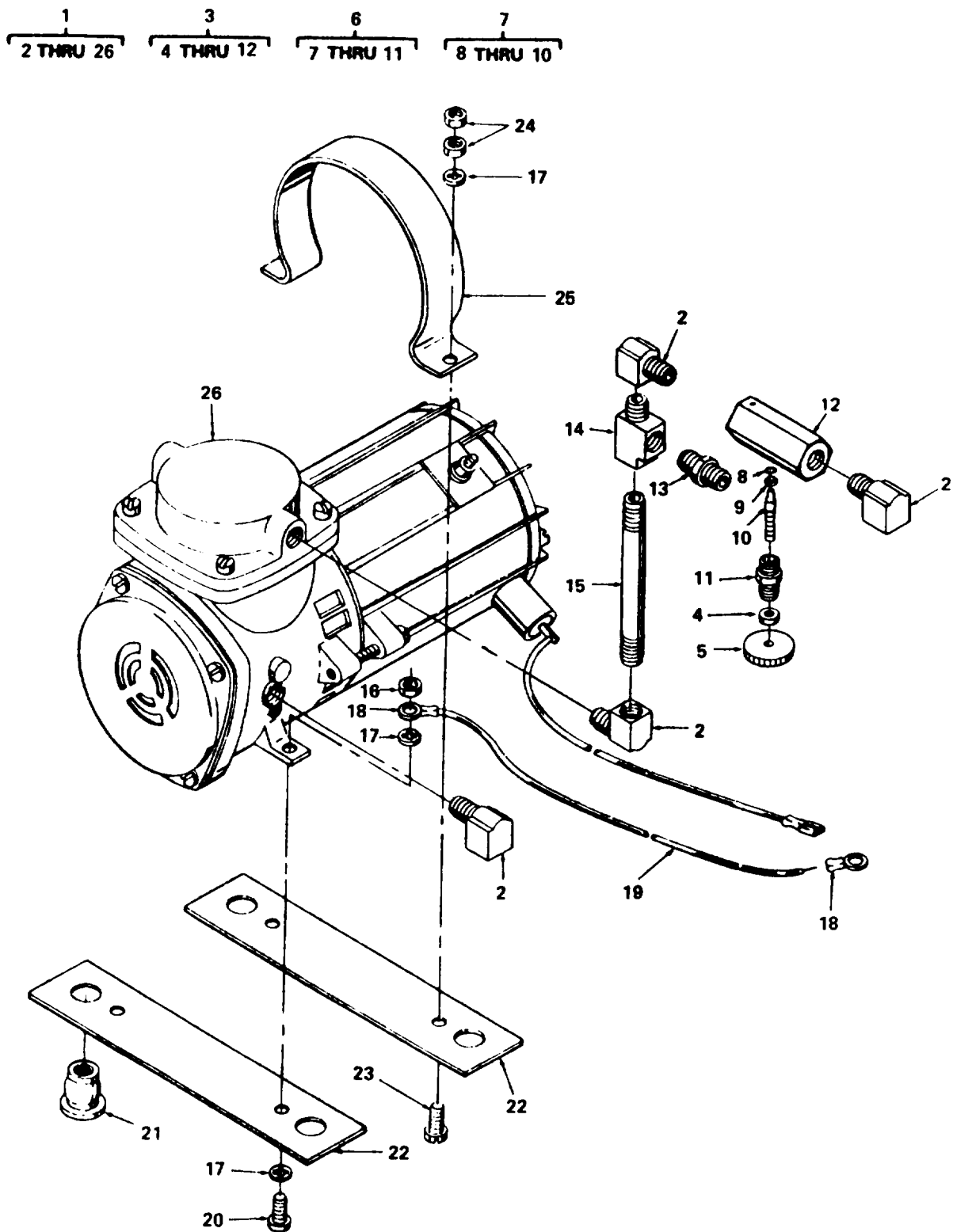
SECTION II (1)	(2)	(3)	TM5-4520-242-23P (4)	(5)	(6)
ITEM NO	SMR CODE	FSCM	PART NUMBER	DESCRIPTION AND USABLE ON CODE (UOC)	QTY
GROUP 07 BLOWER ASSEMBLY					
FIG. 16 MOTOR, BLOWER					
1	PAFZZ	96906	MS35649-282	...NUT PLAIN HEX	2
2	PAFZZ	96906	MS35335-31	...WASHER LOCK EXT T	2
3	XBFZZ	62119	14P29-1	...CAP BRUSH	2
4	XBFZZ	62119	25T18A3	...BRUSH AND SPR ASSY	2
5	XBFZZ	62119	21S8	...STUD CASE	2
6	XAFZZ	62119	39TY12M1	...HEAD REAR	1
7	XBFZZ	62119	34A16	...WASHER SPRING	1
8	XBFZZ	62119	34T263-6	...WSHR SPCR 0.010 THK	3
9	XBFZZ	62119	34T265-4	...WSHR SPCR 0.005 THK	3
10	XAFZZ	62119	15TY20U6	...ARMATURE ASSEMBLY	1
11	XAFZZ	62119	32TY1-281	...FIELD AND SHL ASSY	1
12	XBFZZ	62119	62P137-1	...TUBE BRUSH	2
13	PAFZZ	96906	MS9361-11	...NUT, PLAIN, HEXAGON	1
14	PAFZZ	96906	MS35333-41	...WASHER, LOCK	1
15	PAFZZ	56289	103P608	...CAPACITOR, FIXED, PAP	1
16	XBFZZ	62119	39TY11A15	...HEAD ASSEMBLY BRUSH	1
END OF FIGURE					



4786-017

Figure 17. Housing Assembly, Blower.

SECTION II (1)	ITEM (2)	(3)	TM5-4520-242-23P (4)	(5)	(6)
NO	SMR CODE	FSCM	PART NUMBER	DESCRIPTION AND USABLE ON CODE (UOC)	QTY
GROUP 07 BLOWER ASSEMBLY					
FIG. 17 HOUSING ASSEMBLY, BLOWER					
1	PAFZZ	96906	MS35206-228	...SCREW MACHINE	2
2	PAFZZ	96906	MS35649-262	...NUT PLAIN HEX	2
3	PAFZZ	96906	MS35333-37	...WASHER LOCK INTL T	2
4	PAFZZ	96906	MS24586-C52	...SPRING, HELICAL, EXTE	1
5	PAFZZ	96906	MS35207-267	...SCREW MACHINE	1
6	PAFZZ	96906	MS9881-09	...NUT PLAIN HEX	1
7	PAFZZ	96906	MS35333-39	...WASHER LOCK INTL T	10
8	PAFZZ	96906	MS35207-265	...SCREW MACH PAN HEAD	9
9	XDFZZ	93084	154-233	...HOUSING, BLOWER, HEAT	1
10	XAFZZ	93084	154-166	...CUSHION BLOWER HSG	1
11	XAFZZ	93084	154-125	...HSG BLOWER INTAKE	1
12	XDFZZ	93084	154-220	...WHEEL BLOWER	1
13	XDFZZ	93084	154-128	...BLOWER HSG ASSY MOT	1
14	PAFZZ	96906	MS35649-262	...NUT PLAIN HEX	2
15	PAFZZ	96906	MS35333-37	...WASHER LOCK INTL T	2
16	XAFZZ	93084	154-222	...LINKAGE AIR DAMPER	1
END OF FIGURE					



4786-018

Figure 18. Compressor Mounting Assembly.

SECTION II (1)	ITEM (2)	(3)	TM5-4520-242-23P (4)	(5)	(6)
NO	SMR CODE	FSCM	PART NUMBER	DESCRIPTION AND USABLE ON CODE (UOC)	QTY
GROUP 08 COMPRESSOR ASSEMBLY					
FIG. 18 COMPRESSOR MOUNTING ASSEMBLY					
1	XBFZZ	93084	154-294	MOUNTING ASSY CPRSR	1
2	PAFZZ	79470	3400X2	.ELBOW, PIPE	4
3	PAFZZ	28478	N10BK	.VALVE BRASS NEEDLE	1
4	XAFZZ	28478	00305-01	..NUT VALVE	1
5	XBFZZ	28478	02195-01	..KNOB VALVE	1
6	XBFZZ	28478	01639-01	..HSG AND NEEDLE ASSY	1
7	XBOZZ	28478	01673	...NEEDLE ASSEMBLY	1
8	XAFZZ	28478	00344-02	...WASHER VALVE	1
9	XAFZZ	28478	03005-01PACKING PREFORMED	1
10	XAFZZ	28478	00159NEEDLE VALVE	1
11	XBFZZ	28478	00008-01	...HOUSING VALVE	1
12	XAFZZ	28478	00047-01	..BODY VALVE	1
13	PAFZZ	96906	MS39169-13	.ADAPTER, STRAIGHT, PI	1
14	XBFZZ	79470	3750X2	.TEE, PIPE	1
15	PAFZZ	96906	MS51953-11	.NIPPLE, PIPE	1
16	PAFZZ	96906	MS9881-09	.NUT PLAIN HEX	1
17	PAFZZ	96906	MS35333-39	.WASHER LOCK INTL T	5
18	XBFZZ	05832	A221-10	.TERMINAL EYE	2
19	MFFZZ	93084	154-333	.WIRE ELECTRIC MAKE FROM ELECTRIC WIRE, P/N MIL-W-16878-1-16-90, 10 IN LG	1
20	PAFZZ	96906	MS35206-261	.SCREW MACHINE	2
21	PBFZZ	00613	D1420	.INSERT, SCREW THREAD	4
22	XBFZZ	93084	154-162	.MOUNT COMPRESSOR	2
23	PAFZZ	96906	MS9122-03	.SCREW MACH HEX HD	2
24	PAFZZ	96906	MS35649-202	.NUT, PLAIN, HEXAGON	4
25	XBFZZ	93084	154-214	.STRAP RETAINER	1
26	PBFZZ	93084	154-283	.COMPRESSOR MODIFIED	1

END OF FIGURE

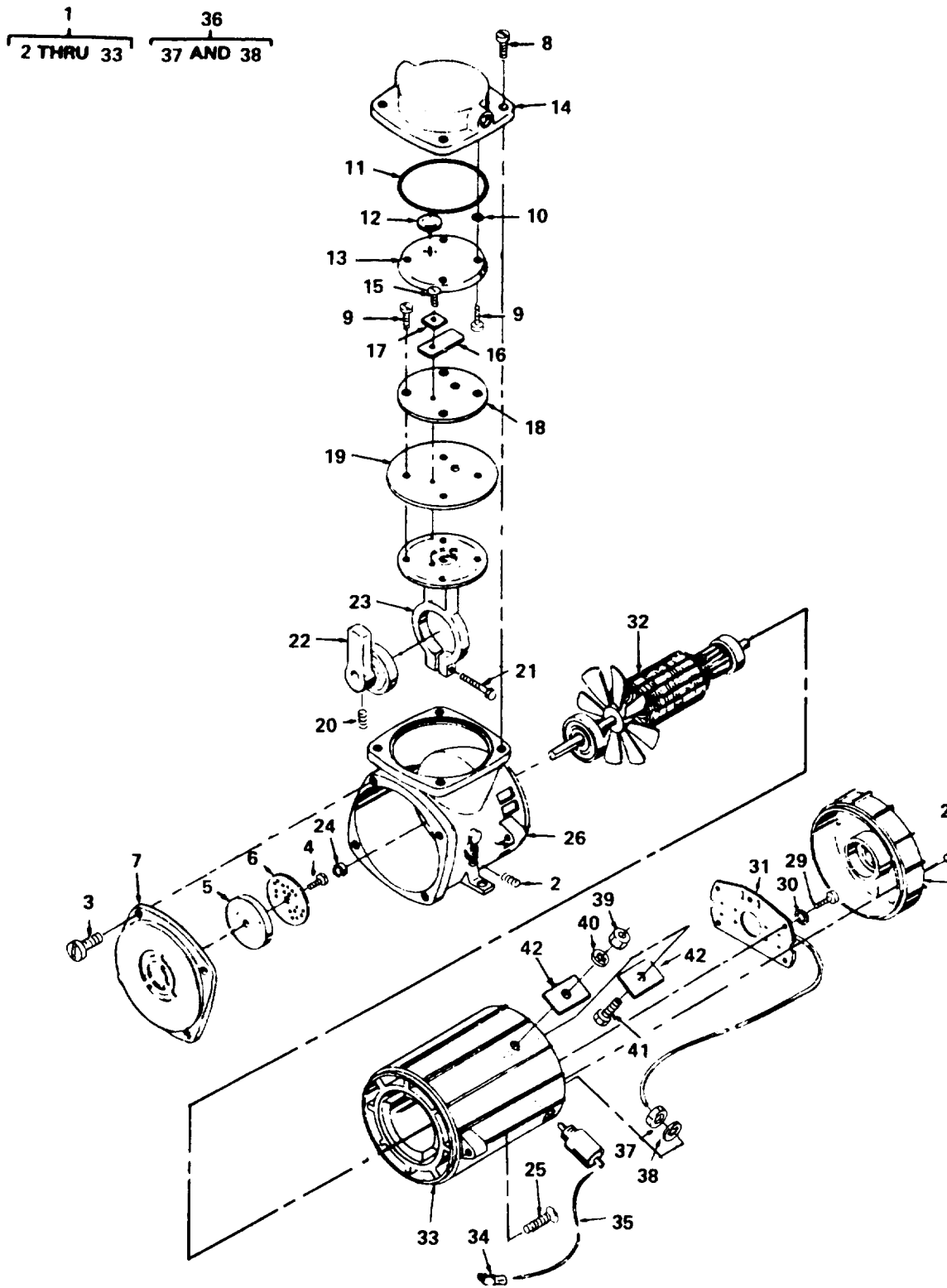


Figure 19. Compressor Assembly.

SECTION II (1)	ITEM (2)	(3)	TM5-4520-242-23P (4)	(5)	(6)
NO	SMR CODE	FSCM	PART NUMBER	DESCRIPTION AND USABLE ON CODE (UOC)	QTY
GROUP 08 COMPRESSOR ASSEMBLY					
FIG. 19 COMPRESSOR ASSEMBLY					
1	XAFZZ	20024	107ADC18-28V	..COMPRESSOR AIR	1
2	XBFZZ	20024	633264	...PLUG PIPE	2
3	XBFZZ	20024	625266	...SCREW FRONT COVER	4
4	XBFZZ	20024	625149	...SCREW FILTER	1
5	XBFZZ	20024	616124	...SCREEN FILTER	1
6	XBFZZ	20024	641007	...FILTER COMPRESSOR	1
7	XBFZZ	20024	614374	...COVER FRONT	1
8	XBFZZ	20024	625109	...SCREW HEAD MOUNTING	4
9	XBFZZ	20024	625141	...SCREW VALVE PLATE	8
10	XBFZZ	20024	623048	...PACKING PREFORMED	4
11	XBFZZ	20024	623120	...PACKING PREFORMED	1
12	XBFZZ	20024	633525	...VALVE UMBRELLA	1
13	XBFZZ	20024	654362	...PLATE EXHAUST VALVE	1
14	XBFZZ	20024	660255	...HEAD COMPRESSOR	1
15	XBFZZ	20024	654652	...SCREW VALVE FLAPPER	1
16	XBFZZ	20024	621102	...VALVE FLAPPER	1
17	XBFZZ	20024	617045	...STRIP VALVE KEEPER	1
18	XBFZZ	20024	654652	...PLATE INTAKE VALVE	1
19	XBFZZ	20024	608146	...DIAPHRAGM CPRSR	1
20	XBFZZ	20024	625244	...SETSCREW ECCENTRIC	1
21	XBFZZ	20024	625114	...SCREW CAP	1
22	XBFZZ	20024	645373	...ECC AND BRG ASSY	1
23	XBFZZ	20024	607139	...ROD CONNECTING	1
24	XBFZZ	20024	615403	...SPACER BEARING	1
25	XBFZZ	20024	625058	...SCREW MOTOR HOUSING	2
26	XBFZZ	20024	660659	...HOUSING MOTOR	1
27	XBFZZ	20024	625260	...SCREW END CAP	2
28	XBFZZ	20024	614377	...CAP MOTOR END	1
29	XBFZZ	20024	625006	...SCREW BRUSH HOLDER	2
30	XBFZZ	20024	626516	...WASHER LOCK	2
31	XBFZZ	20024	627093	...BRUSH AND WIRE ASSY	1
32	XBFZZ	20024	608092	...FAN AND BRG ASSY	1
33	XBFZZ	20024	602492	...HOUSING ASSEMBLY	1
34	XBFZZ	05832	BB8138	..TERMINAL DISCONNECT	1
35	MFFZZ	93084	154-329	..WIRE ELECTRIC MAKE FROM ELECTRIC WIRE, P/N MIL-W-16878-1-16-3, 8 IN LG	1
36	PAFZZ	56289	103P608	..CAPACITOR, FIXED, PAP	1
37	PAFZZ	96906	MS9361-11	...NUT, PLAIN, HEXAGON	1
38	PAFZZ	96906	MS35333-41	...WASHER, LOCK	1
39	PAFZZ	96906	MS9881-09	..NUT PLAIN HEX	1
40	PAFZZ	96906	MS35333-39	..WASHER LOCK INTL T	4
41	PAFZZ	96906	MS9122-03	..SCREW MACH HEX HD	1
42	XBFZZ	93084	154-266	..COVER HOLD	2

END OF FIGURE

SECTION II

TM5-4520-242-23P

(1) ITEM NO	(2) SMR CODE	(3) FSCM	(4) PART NUMBER	(5) DESCRIPTION AND USABLE ON CODE (UOC)	(6) QTY
GROUP 09 BULK MATERIAL					
FIG. BULK					
1	PAFZZ	81349	MIL-W-16878-1-16 -2	WIRE ELEC	V
2	PAFZZ	81349	MIL-W-16878-1-16 -90	WIRE ELEC	V
3	PAFZZ	81349	MIL-W-16878-1-16 -6	WIRE ELEC	V
4	PAFZZ	81349	MIL-W-16878-1-16 -5	WIRE ELEC	V
5	PAFZZ	81349	MIL-W-16878-1-18 -1	WIRE ELEC	V
6	PAFZZ	81349	MIL-W-16878-1-18 -2	WIRE ELEC	V
7	PAFZZ	81349	MIL-W-16878-1-16 -59	WIRE ELEC	V
8	PAFZZ	81349	MIL-W-16878-1-16 -269	WIRE ELEC	V
9	PAFZZ	81349	MIL-W-16878-1-16 -7	WIRE,ELECTRICAL	V
10	PAFZZ	81349	MIL-W-16878-1-16 -4	WIRE,ELECTRICAL	V
11	PAFZZ	81349	MIL-W-16878-1-16 -1	WIRE,ELECTRICAL	V
12	PAFZZ	81349	MIL-W-16878/1	WIRE,ELECTRICAL	V
END OF FIGURE					

Section III. SPECIAL TOOLS LIST
(Not Applicable)

CROSS-REFERENCE INDEXES

NATIONAL STOCK NUMBER INDEX

STOCK NUMBER	FIG.	ITEM	STOCK NUMBER	FIG.	ITEM
5310-00-045-3299	10	4		5	48
5305-00-059-4553	6	22		6	20
5320-00-081-7418	2	21		7	13
5360-00-085-3348	17	4		8	5
5305-00-087-0259	13	4		8	16
	14	3		13	6
5905-00-107-8972	6	33		14	4
5935-00-137-4669	3	25		17	7
5310-00-145-2032	5	26		18	17
	16	13		19	40
	19	37	6145-00-578-6074	BULK	2
5310-00-167-0721	5	27	5310-00-579-0079	3	12
	16	14		5	32
	19	38		6	3
5310-00-167-0818	2	10		7	9
	14	8		7	17
5935-00-167-7775	12	10		7	21
5310-00-193-7577	3	23		8	30
	4	15		17	3
	15	8		17	15
4730-00-196-1481	10	13	5310-00-596-7693	16	2
4730-00-196-1482	10	21	5310-00-622-8610	2	8
4730-00-196-1483	18	15		5	5
5330-00-246-0982	8	14		5	47
5945-00-259-4542	7	35		6	19
5325-00-263-6632	2	16		7	12
	15	18		13	5
4730-00-266-0533	9	1		14	7
4730-00-277-5683	9	10		17	6
4730-00-278-4357	8	8		18	16
	9	4		19	39
	18	13	4730-00-639-9730	9	9
4730-00-287-1603	8	9		10	14
5945-00-489-6585	6	17		18	2
5310-00-515-8058	15	4	5930-00-655-1514	3	5
5935-00-539-2224	3	51	6145-00-702-8816	BULK	12
5930-00-539-7013	3	4	2910-00-710-6054	12	12
5305-00-543-2752	10	3	5305-00-719-5349	8	18
5310-00-550-1130	12	3	5320-00-721-5239	1	5
	13	11			
	15	21		1	16
5310-00-559-0070	3	2		2	2
	3	15	5305-00-724-5805	10	22
	4	3	5330-00-741-3774	12	14
	5	12	5310-00-822-8525	1	4
	8	12		1	11
	13	29		1	15
	15	2		1	21
5310-00-576-5752	2	9	5305-00-857-5867	5	2
	5	3		5	46
5310-00-576-5752	5	6			

CROSS-REFERENCE INDEXES

NATIONAL STOCK NUMBER INDEX

STOCK NUMBER	FIG.	ITEM	STOCK NUMBER	FIG.	ITEM
5305-00-857-5867	8	4	5305-00-984-7341	7	2
	8	15		13	2
	18	23		14	9
	9	41	5305-00-984-7342	5	1
5305-00-889-2999	3	24	5305-00-984-7354	2	12
5305-00-889-3000	5	18	5305-00-988-1721	13	10
5305-00-889-3002	3	47	5305-00-988-1727	15	20
	5	10	5305-00-993-0190	15	6
	15	1	5305-00-993-1848	5	7
2910-00-905-9792	11	2		14	6
2910-00-906-6264	10	2		17	8
4730-00-921-3624	8	10	5305-00-993-1851	17	5
	9	8	5310-00-997-1888	12	2
5310-00-934-9739	3	22	5340-00-998-3264	15	19
	4	14		18	21
	15	7	5940-01-049-9661	3	7
5310-00-934-9747	3	11	6645-01-086-3815	4	6
	5	33	4310-01-086-8766	18	26
	6	2	4730-01-087-1285	13	12
	7	8	4720-01-087-2098	9	7
	7	16	5305-01-087-4479	12	1
	17	2	5325-01-087-4882	1	2
	17	14		1	9
5310-00-934-9757	3	14		1	13
	4	2	4520-01-087-4983	5	15
	5	11	4520-01-087-4984	8	21
	13	28	4810-01-087-5832	10	15
	15	3	4730-01-087-5900	8	23
	16	1			
5310-00-934-9758	18	24	4520-01-087-6547	13	13
5310-00-934-9766	8	22	5950-01-087-9410	5	30
4730-00-939-6234	8	1	4720-01-087-9419	9	6
5935-00-958-1897	5	14	4720-01-088-0876	9	5
5305-00-984-4977	3	44	4720-01-088-1343	8	3
	4	13	4730-01-088-1352	8	27
5305-00-984-4983	7	7	4820-01-088-5385	18	3
	7	15	5330-01-095-3515	8	24
	7	20	5930-01-095-3842	4	16
	8	29	5930-01-095-3843	4	22
5305-00-984-4988	3	10	5930-01-096-2975	3	45
	6	1		7	27
	17	1		7	33
5305-00-984-6193	3	1	5930-01-101-7843	7	10
	4	1	6105-01-102-4221	15	28
	13	27	4520-01-103-0236	8	11
5305-00-984-6208	18	20	5330-01-106-7567	8	26
5305-00-984-6222	5	31			
5305-00-984-7341	1	23			
	2	7			
	6	18			

CROSS-REFERENCE INDEXES

FSCM	PART NUMBER	PART NUMBER INDEX STOCK NUMBER	FIG.	ITEM
81352	AN450D8AD10		2	20
88044	AN960-10	5310-00-167-0818	2	10
			14	8
88044	AN960-8	5310-00-515-8058	15	4
92578	A19BAB3		7	1
05832	A221-10		3	17
			3	27
			3	39
			4	9
			5	16
			5	49
			6	15
			7	23
			7	29
			10	16
			12	5
			15	10
			15	26
			18	18
05832	A234-06		3	8
			3	35
			4	20
			6	12
79960	A7413743		11	4
05832	BB8138	5940-01-049-9661	3	7
			4	4
			4	7
			5	23
			6	6
			6	30
			7	4
			7	25
			7	31
			10	17
			12	9
			15	12
			15	24
			19	34
03743	CG3150	5935-00-958-1897	5	14
11583	CH47		8	13
00613	D1420	5340-00-998-3264	15	19
			18	21
94991	EGC-251		5	19
94991	EGC209		5	21
94991	EGC413		5	20
79960	F10X3		11	3
79960	F2X79T3		11	5
79960	F7X184		11	7
79960	F8X56		11	6
73961	GC202		5	57
93084	HS3715-75W/28VSF		7	24
	1-10			

CROSS-REFERENCE INDEXES

FSCM	PART NUMBER	PART NUMBER INDEX STOCK NUMBER	FIG.	ITEM
81349	MIL-W-16878-1-16		BULK	11
	-1			
81349	MIL-W-16878-1-16		BULK	1
	-2			
81349	MIL-W-16878-1-16		BULK	8
	-269			
81349	MIL-W-16878-1-16		BULK	10
	-4			
81349	MIL-W-16878-1-16		BULK	4
	-5			
81349	MIL-W-16878-1-16		BULK	7
	-59			
81349	MIL-W-16878-1-16		BULK	3
	-6			
81349	MIL-W-16878-1-16		BULK	9
	-7			
81349	MIL-W-16878-1-16	6145-00-578-6074	BULK	2
	-90			
81349	MIL-W-16878-1-18		BULK	5
	-1			
81349	MIL-W-16878-1-18		BULK	6
	-2			
81349	MIL-W-16878/1	6145-00-702-8816	BULK	12
96906	MS16535-12	5320-00-081-7418	2	21
96906	MS16535-153	5320-00-721-5239	1	5
			1	16
			2	2
96906	MS21105-3		6	21
96906	MS21919H3		14	17
96906	MS24586-C52	5360-00-085-3348	17	4
96906	MS25043-14D	5935-00-137-4669	3	25
96906	MS27144-1	5935-00-167-7775	12	10
96906	MS27245-1	5945-00-489-6585	6	17
96906	MS3100R14S-7P		3	30
96906	MS3100R14S7SX		3	41
96906	MS3108B14S7S	5935-00-539-2224	3	51
96906	MS3108E14S-7PX		3	50
96906	MS35058-22	5930-00-655-1514	3	5
96906	MS35190-238	5305-00-059-4553	6	22
96906	MS35191-269	5305-00-984-7354	2	12
96906	MS35191-273	5305-00-984-7341	1	23
			2	7
			6	18
			7	2
			13	2
			14	9
96906	MS35191-274	5305-00-984-7342	5	1
96906	MS35206-214	5305-00-993-0190	15	6
96906	MS35206-217	5305-00-889-2999	3	24
96906	MS35206-220	5305-00-984-4977	3	44
			4	13

CROSS-REFERENCE INDEXES

FSCM	PART NUMBER	PART NUMBER INDEX STOCK NUMBER	FIG.	ITEM
96906	MS35206-226	5305-00-984-4983	7	7
			7	15
			7	20
			8	29
			3	10
96906	MS35206-228	5305-00-984-4988	6	1
			17	1
			5	18
96906	MS35206-230	5305-00-889-3000	5	31
96906	MS35206-235	5305-00-984-6222	3	47
96906	MS35206-242	5305-00-889-3002	5	10
			15	1
			3	1
			4	1
96906	MS35206-245	5305-00-984-6193	13	27
			18	20
			13	10
			15	20
			5	7
96906	MS35206-261	5305-00-984-6208	14	6
			17	8
			17	5
			10	3
			3	23
96906	MS35206-277	5305-00-988-1721	4	15
			15	8
			17	5
			10	3
			3	23
96906	MS35206-283	5305-00-988-1727	4	15
			15	8
			17	5
			10	3
			3	23
96906	MS35207-265	5305-00-993-1848	4	15
			15	8
			3	12
			5	32
			6	3
96906	MS35207-267	5305-00-993-1851	7	9
			7	17
			7	21
			8	30
			17	3
96906	MS35265-45	5305-00-543-2752	17	15
			3	2
			3	15
			4	3
			5	12
96906	MS35333-36	5310-00-193-7577	8	12
			13	29
			15	2
			2	9
			5	3
96906	MS35333-37	5310-00-579-0079	5	6
			5	48
			6	20
			7	13
			8	5
96906	MS35333-38	5310-00-559-0070	8	16
			8	6
			13	6
			3	2
			3	15
96906	MS35333-39	5310-00-576-5752	4	3
			5	12
			8	12
			13	29
			15	2

CROSS-REFERENCE INDEXES

FSCM	PART NUMBER	PART NUMBER INDEX STOCK NUMBER	FIG.	ITEM
96906	MS35333-39	5310-00-576-5752	14	4
			17	7
			18	17
			19	40
96906	MS35333-40	5310-00-550-1130	12	3
			13	11
			15	21
96906	MS35333-41	5310-00-167-0721	5	27
			16	14
			19	38
96906	MS35335-31	5310-00-596-7693	16	2
96906	MS35338-42	5310-00-045-3299	10	4
96906	MS35489-6	5325-00-263-6632	2	16
			15	18
96906	MS35649-202	5310-00-934-9758	18	24
96906	MS35649-2252	5310-00-997-1888	12	2
96906	MS35649-242	5310-00-934-9739	3	22
			4	14
			15	7
			3	11
			5	33
96906	MS35649-262	5310-00-934-9747	6	2
			7	8
			7	16
			17	2
			17	14
			3	14
			4	2
			5	11
96906	MS35649-282	5310-00-934-9757	13	28
			15	3
			16	1
			8	22
			9	1
			9	4
96906	MS35650-305	5310-00-934-9766	18	13
			11	2
79470	MS35869-22	4730-00-266-0533	9	1
96906	MS39169-13	4730-00-278-4357	8	8
			9	4
96906	MS51086-1	2910-00-905-9792	9	8
			18	13
96906	MS51321-1	2910-00-710-6054	11	2
96906	MS51953-10	4730-00-196-1482	12	12
96906	MS51953-11	4730-00-196-1483	10	21
96906	MS51953-6	4730-00-921-3624	18	15
			8	10
96906	MS51953-9	4730-00-196-1481	9	8
96906	MS51963-37	5305-00-719-5349	10	13
96906	MS51964-31	5305-00-724-5805	8	18
96906	MS9122-03	5305-00-857-5867	10	22
			5	2
96906	MS9122-03	5305-00-857-5867	5	46
			8	4
			8	15
			18	23
			19	41

CROSS-REFERENCE INDEXES

FSCM	PART NUMBER	PART NUMBER INDEX STOCK NUMBER	FIG.	ITEM
96906	MS9122-05	5305-00-087-0259	13	4
			14	3
96906	MS9361-11	5310-00-145-2032	5	26
			16	13
			19	37
96906	MS9881-09	5310-00-622-8610	2	8
			5	5
			5	47
			6	19
			7	12
			13	5
			14	7
			17	6
			18	16
			19	39
51181	M21B1/8 1/8 24DC		10	20
28478	N10BK	4820-01-088-5385	18	3
97539	N1030B	5930-00-539-7013	3	4
11583	N678	5330-00-246-0982	8	14
06383	PLTIM-CP		3	32
			3	36
			5	22
			6	4
			14	18
08484	QS200-16H	4730-00-939-6234	8	1
08484	QS200-32H		13	15
			13	20
81349	RER70F20R0R		3	46
			4	17
18324	SE555CV		5	39
92219	T2004		12	6
92219	T2105		5	29
			10	18
79470	W21204		9	2
62119	YZ1U026K	6105-01-102-4221	15	28
60399	0-5520-4		14	2
28478	00008-01		18	11
28478	00047-01		18	12
28478	00159		18	10
28478	00305-01		18	4
28478	00344-02		18	8
96152	013440	2910-00-906-6264	10	2
96152	013441		10	8
96152	013443		10	9
96152	013444		10	6
28478	01639-01		18	6
28478	01673		18	7
96152	017259		10	11
28478	02195-01		18	5
96152	02510		10	10
28478	03005-01		18	9

CROSS-REFERENCE INDEXES

FSCM	PART NUMBER	PART NUMBER INDEX STOCK NUMBER	FIG.	ITEM
44655	0362	5905-00-107-8972	6	33
96152	0700		10	5
96152	07283		10	7
96152	09196		10	12
56289	103P608		5	25
			16	15
			19	36
20024	107ADC18-28V		19	1
62119	14P29-1		16	3
62119	15TY20U6		16	10
93084	154-117		13	25
93084	154-118	4730-01-087-1285	13	12
93084	154-119		13	18
93084	154-120		10	23
93084	154-122		8	6
93084	154-124	4730-01-087-5900	8	23
93084	154-125		17	11
93084	154-128		17	13
93084	154-129		15	29
93084	154-130		1	22
93084	154-131		8	32
93084	154-132		8	31
93084	154-137		1	6
93084	154-139		3	48
93084	154-140		2	5
93084	154-141		2	3
93084	154-142		13	23
93084	154-143		5	52
93084	154-144		5	43
93084	154-145		5	44
93084	154-150		15	22
93084	154-151		15	23
93084	154-152		4	23
93084	154-156		5	40
93084	154-159		4	18
93084	154-161		2	13
93084	154-162		18	22
93084	154-163		13	19
93084	154-164		13	8
			14	10
93084	154-165		5	55
93084	154-166		17	10
93084	154-167		7	19
93084	154-168		7	11
93084	154-169		4	24
93084	154-170		4	28
93084	154-172		2	4
93084	154-175		14	15
93084	154-176		1	24
93084	154-177		13	3
93084	154-178		13	7

CROSS-REFERENCE INDEXES

FSCM	PART NUMBER	PART NUMBER INDEX STOCK NUMBER	FIG.	ITEM
93084	154-179		1	7
93084	154-180		1	18
93084	154-181		2	14
93084	154-182		2	15
93084	154-184	4520-01-087-4984	8	21
93084	154-185	5330-01-095-3515	8	24
93084	154-186		8	17
93084	154-187		8	28
93084	154-188		8	25
93084	154-189	5330-01-106-7567	8	26
93084	154-190		5	8
93084	154-191		14	5
93084	154-192		5	58
93084	154-193		1	17
93084	154-194	6645-01-086-3815	4	6
93084	154-198		13	22
93084	154-199		13	21
93084	154-203		13	16
93084	154-204		13	17
93084	154-205		13	14
93084	154-208		1	20
93084	154-209		1	8
93084	154-210		1	12
93084	154-211		1	1
93084	154-212		1	19
93084	154-214		18	25
93084	154-216	4520-01-103-0236	8	11
93084	154-217		7	34
93084	154-220		17	12
93084	154-221		8	20
93084	154-222		17	16
93084	154-223		8	19
93084	154-233		17	9
93084	154-238		14	14
93084	154-239		14	13
93084	154-240		14	12
93084	154-243		4	27
93084	154-244		4	26
93084	154-245		4	25
93084	154-250		2	11
93084	154-252		2	6
93084	154-255		8	7
93084	154-256		13	30
93084	154-257		2	19
93084	154-258		2	17
93084	154-259		2	18
93084	154-260		15	17
93084	154-261		15	9
93084	154-263		14	11
93084	154-264		13	9
93084	154-265	5305-01-087-4479	12	1

CROSS-REFERENCE INDEXES

FSCM	PART NUMBER	PART NUMBER INDEX STOCK NUMBER	FIG.	ITEM
93084	154-266		19	42
93084	154-267		15	5
93084	154-268		14	16
93084	154-269	4810-01-087-5832	10	15
93084	154-270		7	22
93084	154-271		2	1
93084	154-272		7	28
93084	154-273	5950-01-087-9410	5	30
93084	154-274		14	19
93084	154-275		6	5
93084	154-277	4720-01-087-2098	9	7
93084	154-278	4720-01-088-0876	9	5
93084	154-279	4720-01-088-1343	8	3
93084	154-280	4720-01-087-9419	9	6
93084	154-281		3	33
93084	154-282		3	26
93084	154-283	4310-01-086-8766	18	26
93084	154-284		6	29
93084	154-285		5	56
93084	154-286		3	49
93084	154-287		5	53
93084	154-288		5	45
93084	154-290		5	34
93084	154-292		5	13
93084	154-294		18	1
93084	154-295		5	4
93084	154-296		3	31
93084	154-297		12	4
93084	154-298		14	1
93084	154-299		6	23
93084	154-300		6	26
93084	154-301		15	15
93084	154-302		15	11
			15	27
93084	154-303		15	13
93084	154-304		15	14
93084	154-305		10	19
93084	154-306		7	26
			7	30
93084	154-307		7	32
93084	154-308		15	25
93084	154-309		4	12
			6	7
93084	154-310		6	10
93084	154-311		6	8
93084	154-312		6	11
93084	154-313		6	13
93084	154-314		6	14
93084	154-315		6	16
			12	7
93084	154-316		6	9

CROSS-REFERENCE INDEXES

FSCM	PART NUMBER	PART NUMBER INDEX STOCK NUMBER	FIG.	ITEM
93084	154-317		4	8
93084	154-318		4	10
93084	154-319		4	11
93084	154-320		3	28
			3	40
93084	154-321		3	38
			5	38
93084	154-322		3	34
93084	154-323		3	19
			3	29
93084	154-324		4	21
93084	154-325		4	19
93084	154-326		6	31
93084	154-327		6	32
93084	154-328		5	54
93084	154-329		19	35
93084	154-330		5	50
93084	154-331		5	42
			5	51
93084	154-332		5	24
93084	154-333		18	19
93084	154-334		5	17
			5	35
93084	154-335		5	36
93084	154-336		5	37
93084	154-337		3	43
93084	154-338		3	42
93084	154-339		7	6
93084	154-340		7	5
93084	154-341		4	5
93084	154-342		3	18
93084	154-343		3	9
93084	154-344		12	11
93084	154-360	4520-01-087-6547	13	13
93084	154-361		7	3
93084	154-362		7	14
93084	154-363		3	16
93084	154-364		3	6
93084	154-365		3	3
93084	154-366		12	8
93084	154-367		13	1
93084	154-420		5	9
93084	154-421		13	24
93084	154-422		5	41
93084	154-424		13	26
62119	21S8		16	5
62119	25T18A3		16	4
70563	26N05T	5945-00-259-4542	7	35
34899	2643021801		5	28
70628	3-1565-8		8	2
71895	30609-2	4730-01-088-1352	8	27
75915	307020		3	21

CROSS-REFERENCE INDEXES

FSCM	PART NUMBER	PART NUMBER INDEX STOCK NUMBER	FIG.	ITEM
93084	3100-45-114	5930-01-095-3842	4	16
93084	3100-61-114		7	18
93084	3100-61-116	5930-01-096-2975	3	45
			7	27
			7	33
93084	3100-61-125	5930-01-101-7843	7	10
79470	3150X2		10	1
			11	1
62119	32TY1-281		16	11
79470	3220X4X2		9	3
79470	3350X2	4730-00-277-5683	9	10
62119	34A16		16	7
62119	34T263-6		16	8
62119	34T265-4		16	9
79470	3400X2	4730-00-639-9730	9	9
			10	14
			18	2
05832	34005-5		6	25
75915	342-013AL		3	20
08532	3422		6	24
			6	27
93084	3455RM77	5930-01-095-3843	4	22
79470	3500X2	4730-00-287-1603	8	9
79470	3750X2		18	14
62119	39TY11A15		16	16
62119	39TY12M1		16	6
72850	475126		12	18
72850	475127		12	19
72850	475594	5330-00-741-3774	12	14
72850	475634		12	15
72850	476364		12	17
72850	476474		12	20
72850	476563		12	13
79470	48X4X4	4730-00-391-3771	9	1
72850	490028		12	16
78488	56-0053		3	37
05614	600-4		6	28
20024	602492		19	33
20024	607139		19	23
20024	608092		19	32
20024	608146		19	19
20024	614374		19	7
20024	614377		19	28
20024	615403		19	24
20024	616124		19	5
20024	617045		19	17
62119	62P137-1		16	12
20024	621102		19	16
20024	623048		19	10
20024	623120		19	11

CROSS-REFERENCE INDEXES

FSCM	PART NUMBER	PART NUMBER INDEX STOCK NUMBER	FIG.	ITEM
20024	625006		19	29
20024	625058		19	25
20024	625109		19	8
20024	625114		19	21
20024	625141		19	9
20024	625149		19	4
20024	625160		19	15
20024	625244		19	20
20024	625260		19	27
20024	625266		19	3
20024	626516		19	30
20024	627093		19	31
20024	633264		19	2
20024	633525		19	12
20024	641007		19	6
20024	645373		19	22
20024	654362		19	13
20024	654652		19	18
20024	660255		19	14
20024	660659		19	26
93084	66670	4520-01-087-4983	5	15
93084	7673-1F		3	13
00000	7762624		12	21
94222	85-11-100-16	5325-01-087-4882	1	2
			1	9
			1	13
94222	85-11-160-16		1	3
			1	10
			1	14
94222	85-34-101-20	5310-00-822-8525	1	4
			1	11
			1	15
			1	21
94222	85-35-295-15		2	22
70563	9JM2		15	16

CROSS-REFERENCE INDEXES

FIG.	FIGURE AND ITEM NUMBER INDEX ITEM	STOCK NUMBER	FSCM	PART NUMBER
BULK	1		81349	MIL-W-16878-1-16 -2
BULK	2	6145-00-578-6074	81349	MIL-W-16878-1-16 -90
BULK	3		81349	MIL-W-16878-1-16 -6
BULK	4		81349	MIL-W-16878-1-16 -5
BULK	5		81349	MIL-W-16878-1-18 -1
BULK	6		81349	MIL-W-16878-1-18 -2
BULK	7		81349	MIL-W-16878-1-16 -59
BULK	8		81349	MIL-W-16878-1-16 -269
BULK	9		81349	MIL-W-16878-1-16 -7
BULK	10		81349	MIL-W-16878-1-16 -4
BULK	11		81349	MIL-W-16878-1-16 -1
BULK	12	6145-00-702-8816	81349	MIL-W-16878/1
1	1		93084	154-211
1	2	5325-01-087-4882	94222	85-11-100-16
1	3		94222	85-11-160-16
1	4	5310-00-822-8525	94222	85-34-101-20
1	5	5320-00-721-5239	96906	MS16535-153
1	6		93084	154-137
1	7		93084	154-179
1	8		93084	154-209
1	9	5325-01-087-4882	94222	85-11-100-16
1	10		94222	85-11-160-16
1	11	5310-00-822-8525	94222	85-34-101-20
1	12		93084	154-210
1	13	5325-01-087-4882	94222	85-11-100-16
1	14		94222	85-11-160-16
1	15	5310-00-822-8525	94222	85-34-101-20
1	16	5320-00-721-5239	96906	MS16535-153
1	17		93084	154-193
1	18		93084	154-180
1	19		93084	154-212
1	20		93084	154-208
1	21	5310-00-822-8525	94222	85-34-101-20
1	22		93084	154-130
1	23	5305-00-984-7341	96906	MS35191-273
1	24		93084	154-176
2	1		93084	154-271
2	2	5320-00-721-5239	96906	MS16535-153
2	3		93084	154-141
2	4		93084	154-172

CROSS-REFERENCE INDEXES

FIG.	FIGURE AND ITEM NUMBER INDEX ITEM	STOCK NUMBER	FSCM	PART NUMBER
2	5		93084	154-140
2	6		93084	154-252
2	7	5305-00-984-7341	96906	MS35191-273
2	8	5310-00-622-8610	96906	MS9881-09
2	9	5310-00-576-5752	96906	MS35333-39
2	10	5310-00-167-0818	88044	AN960-10
2	11		93084	154-250
2	12	5305-00-984-7354	96906	MS35191-269
2	13		93084	154-161
2	14		93084	154-181
2	15		93084	154-182
2	16	5325-00-263-6632	96906	MS35489-6
2	17		93084	154-258
2	18		93084	154-259
2	19		93084	154-257
2	20		81352	AN450D8AD10
2	21	5320-00-081-7418	96906	MS16535-12
2	22		94222	85-35-295-15
3	1	5305-00-984-6193	96906	MS35206-245
3	2	5310-00-559-0070	96906	MS35333-38
3	3		93084	154-365
3	4	5930-00-539-7013	97539	N1030B
3	5	5930-00-655-1514	96906	MS35058-22
3	6		93084	154-364
3	7	5940-01-049-9661	05832	BB8138
3	8		05832	A234-06
3	9		93084	154-343
3	10	5305-00-984-4988	96906	MS35206-228
3	11	5310-00-934-9747	96906	MS35649-262
3	12	5310-00-579-0079	96906	MS35333-37
3	13		93084	7673-1F
3	14	5310-00-934-9757	96906	MS35649-282
3	15	5310-00-559-0070	96906	MS35333-38
3	16		93084	154-363
3	17		05832	A221-10
3	18		93084	154-342
3	19		93084	154-323
3	20		75915	342-013AL
3	21		75915	307020
3	22	5310-00-934-9739	96906	MS35649-242
3	23	5310-00-193-7577	96906	MS35333-36
3	24	5305-00-889-2999	96906	MS35206-217
3	25	5935-00-137-4669	96906	MS25043-14D
3	26		93084	154-282
3	27		05832	A221-10
3	28		93084	154-320
3	29		93084	154-323
3	30		96906	MS3100R14S-7P
3	31		93084	154-296
3	32		06383	PLTIM-CP
3	33		93084	154-281

CROSS-REFERENCE INDEXES

FIG.	FIGURE AND ITEM NUMBER INDEX ITEM	STOCK NUMBER	FSCM	PART NUMBER
3	34		93084	154-322
3	35		05832	A234-06
3	36		06383	PLTIM-CP
3	37		78488	57-0053
3	38		93084	154-321
3	39		05832	A221-10
3	40		93084	154-320
3	41		96906	MS3100R14S7SX
3	42		93084	154-338
3	43		93084	154-337
3	44	5305-00-984-4977	96906	MS35206-220
3	45	5930-01-096-2975	93084	3100-61-116
3	46		81349	RER70F20R0R
3	47	5305-00-889-3002	96906	MS35206-242
3	48		93084	154-139
3	49		93084	154-286
3	50		96906	MS3108E14S-7PX
3	51	5935-00-539-2224	96906	MS3108B14S7S
4	1	5305-00-984-6193	96906	MS35206-245
4	2	5310-00-934-9757	96906	MS35649-282
4	3	5310-00-559-0070	96906	MS35333-38
4	4		05832	BB8138
4	5		93084	154-341
4	6	6645-01-086-3815	93084	154-194
4	7		05832	BB8138
4	8		93084	154-317
4	9		05832	A221-10
4	10		93084	154-318
4	11		93084	154-319
4	12		93084	154-309
4	13	5305-00-984-4977	96906	MS35206-220
4	14	5310-00-934-9739	96906	MS35649-242
4	15	5310-00-193-7577	96906	MS35333-36
4	16	5930-01-095-3842	93084	3100-45-114
4	17		81349	RER70F20R0R
4	18		93084	154-159
4	19		93084	154-325
4	20		05832	A234-06
4	21		93084	154-324
4	22	5930-01-095-3843	93084	3455RM77
4	23		93084	154-152
4	24		93084	154-169
4	25		93084	154-245
4	26		93084	154-244
4	27		93084	154-243
4	28		93084	154-170
5	1	5305-00-984-7342	96906	MS35191-274
5	2	5305-00-857-5867	96906	MS9122-03
5	3	5310-00-576-5752	96906	MS35333-39
5	4		93084	154-295
5	5	5310-00-622-8610	96906	MS9881-09

CROSS-REFERENCE INDEXES

FIG.	FIGURE AND ITEM	INDEX STOCK NUMBER	FSCM	PART NUMBER
5	6	5310-00-576-5752	96906	MS35333-39
5	7	5305-00-993-1848	96906	MS35207-265
5	8		93084	154-190
5	9		93084	154-420
5	10	5305-00-889-3002	96906	MS35206-242
5	11	5310-00-934-9757	96906	MS35649-282
5	12	5310-00-559-0070	96906	MS35333-38
5	13		93084	154-292
5	14	5935-00-958-1897	03743	CG3150
5	15	4520-01-087-4983	93084	66670
5	16		05832	A221-10
5	17		93084	154-334
5	18	5305-00-889-3000	96906	MS35206-230
5	19		94991	EGC-251
5	20		94991	EGC413
5	21		94991	EGC209
5	22		06383	PLTIM-CP
5	23		05832	BB8138
5	24		93084	154-332
5	25		56289	103P608
5	26	5310-00-145-2032	96906	MS9361-11
5	27	5310-00-167-0721	96906	MS35333-41
5	28		78488	57-0257
5	29		92219	T2105
5	30	5950-01-087-9410	93084	154-273
5	31	5305-00-984-6222	96906	MS35206-235
5	32	5310-00-579-0079	96906	MS35333-37
5	33	5310-00-934-9747	96906	MS35649-262
5	34		93084	154-290
5	35		93084	154-334
5	36		93084	154-335
5	37		93084	154-336
5	38		93084	154-321
5	39		18324	SE555CV
5	40		93084	154-156
5	41		93084	154-422
5	42		93084	154-331
5	43		93084	154-144
5	44		93084	154-145
5	45		93084	154-288
5	46	5305-00-857-5867	96906	MS9122-03
5	47	5310-00-622-8610	96906	MS9881-09
5	48	5310-00-576-5752	96906	MS35333-39
5	49		05832	A221-10
5	50		93084	154-330
5	51		93084	154-331
5	52		93084	154-143
5	53		93084	154-287
5	54		93084	154-328
5	55		93084	154-165
5	56		93084	154-285

CROSS-REFERENCE INDEXES

FIG.	FIGURE AND ITEM NUMBER INDEX ITEM	STOCK NUMBER	FSCM	PART NUMBER
5	57		73961	GC202
5	58		93084	154-192
6	1	5305-00-984-4988	96906	MS35206-228
6	2	5310-00-934-9747	96906	MS35649-262
6	3	5310-00-579-0079	96906	MS35333-37
6	4		06383	PLTIM-CP
6	5		93084	154-275
6	6		05832	BB8138
6	7		93084	154-309
6	8		93084	154-311
6	9		93084	154-316
6	10		93084	154-310
6	11		93084	154-312
6	12		05832	A234-06
6	13		93084	154-313
6	14		93084	154-314
6	15		05832	A221-10
6	16		93084	154-315
6	17	5945-00-489-6585	96906	MS27245-1
6	18	5305-00-984-7341	96906	MS35191-273
6	19	5310-00-622-8610	96906	MS9881-09
6	20	5310-00-576-5752	96906	MS35333-39
6	21		96906	MS21105-3
6	22	5305-00-059-4553	96906	MS35190-238
6	23		93084	154-299
6	24		05832	3422
6	25		05832	34005-5
6	26		93084	154-300
6	27		05832	3422
6	28		05614	600-4
6	29		93084	154-284
6	30		05832	BB8138
6	31		93084	154-326
6	32		93084	154-327
6	33	5905-00-107-8972	44655	0362
7	1		92578	A19BAB3
7	2	5305-00-984-7341	96906	MS35191-273
7	3		93084	154-361
7	4		05832	BB8138
7	5		93084	154-340
7	6		93084	154-339
7	7	5305-00-984-4983	96906	MS35206-226
7	8	5310-00-934-9747	96906	MS35649-262
7	9	5310-00-579-0079	96906	MS35333-37
7	10	5930-01-101-7843	93084	3100-61-125
7	11		93084	154-168
7	12	5310-00-622-8610	96906	MS9881-09
7	13	5310-00-576-5752	96906	MS35333-39
7	14		93084	154-362
7	15	5305-00-984-4983	96906	MS35206-226
7	16	5310-00-934-9747	96906	MS35649-262

CROSS-REFERENCE INDEXES

FIG.	FIGURE AND ITEM	INDEX STOCK NUMBER	FSCM	PART NUMBER
7	17	5310-00-579-0079	96906	MS35333-37
7	18		93084	3100-61-114
7	19		93084	154-167
7	20	5305-00-984-4983	96906	MS35206-226
7	21	5310-00-579-0079	96906	MS35333-37
7	22		93084	154-270
7	23		05832	A221-10
7	24		93084	HS3715-75W/28VSF 1-10
7	25		05832	BB8138
7	26		93084	154-306
7	27	5930-01-096-2975	93084	3100-61-116
7	28		93084	154-272
7	29		05832	A221-10
7	30		93084	154-306
7	31		05832	BB8138
7	32		93084	154-307
7	33	5930-01-096-2975	93084	3100-61-116
7	34		93084	154-217
7	35	5945-00-259-4542	70563	26N05T
8	1	4730-00-939-6234	08484	QS200-16H
8	2		70628	3-1565-8
8	3	4720-01-088-1343	93084	154-279
8	4	5305-00-857-5867	96906	MS9122-03
8	5	5310-00-576-5752	96906	MS35333-39
8	6		93084	154-122
8	7		93084	154-255
8	8	4730-00-278-4357	96906	MS39169-13
8	9	4730-00-287-1603	79470	3500X2
8	10	4730-00-921-3624	96906	MS51953-6
8	11	4520-01-103-0236	93084	154-216
8	12	5310-00-559-0070	96906	MS35333-38
8	13		11583	CH47
8	14	5330-00-246-0982	11583	N678
8	15	5305-00-857-5867	96906	MS9122-03
8	16	5310-00-576-5752	96906	MS35333-39
8	17		93084	154-186
8	18	5305-00-719-5349	96906	MS51963-37
8	19		93084	154-223
8	20		93084	154-221
8	21	4520-01-087-4984	93084	154-184
8	22	5310-00-934-9766	96906	MS35650-305
8	23	4730-01-087-5900	93084	154-124
8	24	5330-01-095-3515	93084	154-185
8	25		93084	154-188
8	26	5330-01-106-7567	93084	154-189
8	27	4730-01-088-1352	71895	30609-2
8	28		93084	154-187
8	29	5305-00-984-4983	96906	MS35206-226
8	30	5310-00-579-0079	96906	MS35333-37
8	31		93084	154-132

CROSS-REFERENCE INDEXES

FIG.	FIGURE AND ITEM NUMBER INDEX ITEM	STOCK NUMBER	FSCM	PART NUMBER
8	32		93084	154-131
9	1	4730-00-391-3771	79470	48X4X4
9	2		79470	W21204
9	3		79470	3220X4X2
9	4	4730-00-278-4357	96906	MS39169-13
9	5	4720-01-088-0876	93084	154-278
9	6	4720-01-087-9419	93084	154-280
9	7	4720-01-087-2098	93084	154-277
9	8	4730-00-921-3624	96906	MS51953-6
9	9	4730-00-639-9730	79470	3400X2
9	10	4730-00-277-5683	79470	3350X2
10	1		79470	3150X2
10	2	2910-00-906-6264	96152	013440
10	3	5305-00-543-2752	96906	MS35265-45
10	4	5310-00-045-3299	96906	MS35338-42
10	5		96152	0700
10	6		96152	013444
10	7		96152	07283
10	8		96152	013441
10	9		96152	013443
10	10		96152	02510
10	11		96152	017259
10	12		96152	09196
10	13	4730-00-196-1481	96906	MS51953-9
10	14	4730-00-639-9730	79470	3400X2
10	15	4810-01-087-5832	93084	154-269
10	16		05832	A221-10
10	17		05832	BB8138
10	18		92219	T2105
10	19		93084	154-305
10	20		51181	M21B1/8 1/8 24DC
10	21	4730-00-196-1482	96906	MS51953-10
10	22	5305-00-724-5805	96906	MS51964-31
10	23		93084	154-120
11	1		79470	3150X2
11	2	2910-00-905-9792	96906	MS51086-1
11	3		79960	F10X3
11	4		79960	A7413743
11	5		79960	F2X79T3
11	6		79960	F8X56
11	7		79960	F7X184
12	1	5305-01-087-4479	93084	154-265
12	2	5310-00-997-1888	96906	MS35649-2252
12	3	5310-00-550-1130	96906	MS35333-40
12	4		93084	154-297
12	5		05832	A221-10
12	6		92219	T2004
12	7		93084	154-315
12	8		93084	154-366
12	9		05832	BB8138
12	10	5935-00-167-7775	96906	MS27144-1

CROSS-REFERENCE INDEXES

FIG.	FIGURE AND ITEM NUMBER INDEX ITEM	STOCK NUMBER	FSCM	PART NUMBER
12	11		93084	154-344
12	12	2910-00-710-6054	96906	MS51321-1
12	13		72850	476563
12	14	5330-00-741-3774	72850	475594
12	15		72850	475634
12	16		72850	490028
12	17		72850	476364
12	18		72850	475126
12	19		72850	475127
12	20		72850	476474
12	21		00000	7762624
13	1		93084	154-367
13	2	5305-00-984-7341	96906	MS35191-273
13	3		93084	154-177
13	4	5305-00-087-0259	96906	MS9122-05
13	5	5310-00-622-8610	96906	MS9881-09
13	6	5310-00-576-5752	96906	MS35333-39
13	7		93084	154-178
13	8		93084	154-164
13	9		93084	154-264
13	10	5305-00-988-1721	96906	MS35206-277
13	11	5310-00-550-1130	96906	MS35333-40
13	12	4730-01-087-1285	93084	154-118
13	13	4520-01-087-6547	93084	154-360
13	14		93084	154-205
13	15		08484	QS200-32H
13	16		93084	154-203
13	17		93084	154-204
13	18		93084	154-119
13	19		93084	154-163
13	20		08484	QS200-32H
13	21		93084	154-199
13	22		93084	154-198
13	23		93084	154-142
13	24		93084	154-421
13	25		93084	154-117
13	26		93084	154-424
13	27	5305-00-984-6193	96906	MS35206-245
13	28	5310-00-934-9757	96906	MS35649-282
13	29	5310-00-559-0070	96906	MS35333-38
13	30		93084	154-256
14	1		93084	154-298
14	2		60399	0-5520-4
14	3	5305-00-087-0259	96906	MS9122-05
14	4	5310-00-576-5752	96906	MS35333-39
14	5		93084	154-191
14	6	5305-00-993-1848	96906	MS35207-265
14	7	5310-00-622-8610	96906	MS9881-09
14	8	5310-00-167-0818	88044	AN960-10
14	9	5305-00-984-7341	96906	MS35191-273
14	10		93084	154-164

CROSS-REFERENCE INDEXES

FIG.	FIGURE AND ITEM NUMBER INDEX ITEM	STOCK NUMBER	FSCM	PART NUMBER
14	11		93084	154-263
14	12		93084	154-240
14	13		93084	154-239
14	14		93084	154-238
14	15		93084	154-175
14	16		93084	154-268
14	17		96906	MS21919H3
14	18		06383	PLTIM-CP
14	19		93084	154-274
15	1	5305-00-889-3002	96906	MS35206-242
15	2	5310-00-559-0070	96906	MS35333-38
15	3	5310-00-934-9757	96906	MS35649-282
15	4	5310-00-515-8058	88044	AN960-8
15	5		93084	154-267
15	6	5305-00-993-0190	96906	MS35206-214
15	7	5310-00-934-9739	96906	MS35649-242
15	8	5310-00-193-7577	96906	MS35333-36
15	9		93084	154-261
15	10		05832	A221-10
15	11		93084	154-302
15	12		05832	BB8138
15	13		93084	154-303
15	14		93084	154-304
15	15		93084	154-301
15	16		70563	9JM2
15	17		93084	154-260
15	18	5325-00-263-6632	96906	MS35489-6
15	19	5340-00-998-3264	00613	D1420
15	20	5305-00-988-1727	96906	MS35206-283
15	21	5310-00-550-1130	96906	MS35333-40
15	22		93084	154-150
15	23		93084	154-151
15	24		05832	BB8138
15	25		93084	154-308
15	26		05832	A221-10
15	27		93084	154-302
15	28	6105-01-102-4221	62119	YZ1U026K
15	29		93084	154-129
16	1	5310-00-934-9757	96906	MS35649-282
16	2	5310-00-596-7693	96906	MS35335-31
16	3		62119	14P29-1
16	4		62119	25T18A3
16	5		62119	21S8
16	6		62119	39TY12M1
16	7		62119	34A16
16	8		62119	34T263-6
16	9		62119	34T265-4
16	10		62119	15TY20U6
16	11		62119	32TY1-281
16	12		62119	62P137-1
16	13	5310-00-145-2032	96906	MS9361-11

CROSS-REFERENCE INDEXES

FIG.	FIGURE AND ITEM	INDEX STOCK NUMBER	FSCM	PART NUMBER
16	14	5310-00-167-0721	96906	MS35333-41
16	15		56289	103P608
16	16		62119	39TY11A15
17	1	5305-00-984-4988	96906	MS35206-228
17	2	5310-00-934-9747	96906	MS35649-262
17	3	5310-00-579-0079	96906	MS35333-37
17	4	5360-00-085-3348	96906	MS24586-C52
17	5	5305-00-993-1851	96906	MS35207-267
17	6	5310-00-622-8610	96906	MS9881-09
17	7	5310-00-576-5752	96906	MS35333-39
17	8	5305-00-993-1848	96906	MS35207-265
17	9		93084	154-233
17	10		93084	154-166
17	11		93084	154-125
17	12		93084	154-220
17	13		93084	154-128
17	14	5310-00-934-9747	96906	MS35649-262
17	15	5310-00-579-0079	96906	MS35333-37
17	16		93084	154-222
18	1		93084	154-294
18	2	4730-00-639-9730	79470	3400X2
18	3	4820-01-088-5385	28478	N10BK
18	4		28478	00305-01
18	5		28478	02195-01
18	6		28478	01639-01
18	7		28478	01673
18	8		28478	00344-02
18	9		28478	03005-01
18	10		28478	00159
18	11		28478	00008-01
18	12		28478	00047-01
18	13	4730-00-278-4357	96906	MS39169-13
18	14		79470	3750X2
18	15	4730-00-196-1483	96906	MS51953-11
18	16	5310-00-622-8610	96906	MS9881-09
18	17	5310-00-576-5752	96906	MS35333-39
18	18		05832	A221-10
18	19		93084	154-333
18	20	5305-00-984-6208	96906	MS35206-261
18	21	5340-00-998-3264	00613	D1420
18	22		93084	154-162
18	23	5305-00-857-5867	96906	MS9122-03
18	24	5310-00-934-9758	96906	MS35649-202
18	25		93084	154-214
18	26	4310-01-086-8766	93084	154-283
19	1		20024	107ADC18-28V
19	2		20024	633264
19	3		20024	625266
19	4		20024	625149
19	5		20024	616124
19	6		20024	641007

CROSS-REFERENCE INDEXES

FIG.	FIGURE AND ITEM NUMBER INDEX ITEM	STOCK NUMBER	FSCM	PART NUMBER
19	7		20024	614374
19	8		20024	625109
19	9		20024	625141
19	10		20024	623048
19	11		20024	623120
19	12		20024	633525
19	13		20024	654362
19	14		20024	660255
19	15		20024	625160
19	16		20024	621102
19	17		20024	617045
19	18		20024	654652
19	19		20024	608146
19	20		20024	625244
19	21		20024	625114
19	22		20024	645373
19	23		20024	607139
19	24		20024	615403
19	25		20024	625058
19	26		20024	660659
19	27		20024	625260
19	28		20024	614377
19	29		20024	625006
19	30		20024	626516
19	31		20024	627093
19	32		20024	608092
19	33		20024	602492
19	34		05832	BB8138
19	35		93084	154-329
19	36		56289	103P608
19	37	5310-00-145-2032	96906	MS9361-11
19	38	5310-00-167-0721	96906	MS35333-41
19	39	5310-00-622-8610	96906	MS9881-09
19	40	5310-00-576-5752	96906	MS35333-39
19	41	5305-00-857-5867	96906	MS9122-03
19	42		93084	154-266

By Order of the Secretary of the Army:

Official:

CARL E. VUONO

*General United States Army
Chief of Staff*

WILLIAM J. MEEHAN, II

*Brigadier General, United States Army
The Adjutant General*

DISTRIBUTION:

To be distributed in accordance with DA Form 12-25A, Organizational and Direct Support Maintenance requirements for Heater, Space, Multifuel, 28V DC, 15,000 BTU (VBM-15-1V)

RECOMMENDED CHANGES TO EQUIPMENT TECHNICAL PUBLICATIONS



THEN... JOT DOWN THE DOPE ABOUT IT ON THIS FORM. CAREFULLY TEAR IT OUT. FOLD IT AND DROP IT IN THE MAIL!

SOMETHING WRONG WITH THIS PUBLICATION?

FROM: (PRINT YOUR UNIT'S COMPLETE ADDRESS)
PFC JOHN DOE
COA, 3d ENGINEER BN
FT. LEONARDWOOD, MD 63108
 DATE SENT

PUBLICATION NUMBER TM 5-4520-242-23P	PUBLICATION DATE 9 Feb 1990	PUBLICATION TITLE HEATER, SPACE, MULTIFUEL
-----------------------------------------	--------------------------------	-----------------------------------------------

BE EXACT PIN-POINT WHERE IT IS

PAGE NO	PARA-GRAPH	FIGURE NO	TABLE NO
6	2-1 a		
B1		4-3	
125	line 20		

IN THIS SPACE TELL WHAT IS WRONG AND WHAT SHOULD BE DONE ABOUT IT:

In line 6 of paragraph 2-1a the manual states the engine has 6 Cylinders. The engine on my set only has 4 Cylinders. Change the manual to show 4 Cylinders.

Callout 16 on figure 4-3 is pointing at a bolt. In key to figure 4-3, item 16 is called a shim - Please correct one or the other.

I ordered a gasket, item 19 on figure B-16 by NSN 2 910-00-762-3001. I got a gasket but it doesn't fit. Supply says I got what I ordered, so the NSN is wrong. Please give me a good NSN

PRINTED NAME, GRADE OR TITLE, AND TELEPHONE NUMBER

JOHN DOE, PFC (268) 317-7111

SIGN HERE

John Doe
JOHN DOE

DA FORM 1 JUL 79 2028-2

PREVIOUS EDITIONS ARE OBSOLETE.
 DRSTS-M Overprint 1, 1 Nov 80

P.S.--IF YOUR OUTFIT WANTS TO KNOW ABOUT YOUR RECOMMENDATION MAKE A CARBON COPY OF THIS AND GIVE IT TO YOUR HEADQUARTERS

TEAR ALONG PERFORATED LINE

FILL IN YOUR
UNIT'S ADDRESS

FOLD BACK

DEPARTMENT OF THE ARMY

OFFICIAL BUSINESS

COMMANDER
U S ARMY TROOP SUPPORT COMMAND
ATTN: AMSTR-MCTS
4300 GOODFELLOW BOULEVARD
ST. LOUIS, MO 63120-1798

TEAR ALONG PERFORATED LINE

FILL IN YOUR
UNIT'S ADDRESS

FOLD BACK

DEPARTMENT OF THE ARMY

OFFICIAL BUSINESS

COMMANDER
U S ARMY TROOP SUPPORT COMMAND
ATTN: AMSTR-MCTS
4300 GOODFELLOW BOULEVARD
ST. LOUIS, MO 63120-1796

TEAR ALONG PERFORATED LINE

RECOMMENDED CHANGES TO EQUIPMENT TECHNICAL PUBLICATIONS



THEN... JOT DOWN THE DOPE ABOUT IT ON THIS FORM. CAREFULLY TEAR IT OUT. FOLD IT AND DROP IT IN THE MAIL!

SOMETHING WRONG WITH THIS PUBLICATION?

FROM: (PRINT YOUR UNIT'S COMPLETE ADDRESS)

DATE SENT

PUBLICATION NUMBER
TM 5-4520-242-23P

PUBLICATION DATE
9 Feb 1990

PUBLICATION TITLE
HEATER, SPACE, MULTIFUEL

BE EXACT PIN-POINT WHERE IT IS			
PAGE NO	PARA-GRAPH	FIGURE NO	TABLE NO

IN THIS SPACE TELL WHAT IS WRONG AND WHAT SHOULD BE DONE ABOUT IT:

PRINTED NAME, GRADE OR TITLE, AND TELEPHONE NUMBER

SIGN HERE

TEAR ALONG PERFORATED LINE

FILL IN YOUR
UNIT'S ADDRESS

FOLD BACK

DEPARTMENT OF THE ARMY

OFFICIAL BUSINESS

COMMANDER
U S ARMY TROOP SUPPORT COMMAND
ATTN: AMSTR-MCTS
4300 GOODFELLOW BOULEVARD
ST. LOUIS, MO 63120-1798

TEAR ALONG PERFORATED LINE

RECOMMENDED CHANGES TO EQUIPMENT TECHNICAL PUBLICATIONS



THEN... JOT DOWN THE DOPE ABOUT IT ON THIS FORM. CAREFULLY TEAR IT OUT. FOLD IT AND DROP IT IN THE MAIL!

SOMETHING WRONG WITH THIS PUBLICATION?

FROM: (PRINT YOUR UNIT'S COMPLETE ADDRESS)

DATE SENT

PUBLICATION NUMBER

TM 5-4520-242-23P

PUBLICATION DATE

9 Feb 1990

PUBLICATION TITLE

HEATER, SPACE, MULTIFUEL

BE EXACT PIN-POINT WHERE IT IS

PAGE NO

PARA-GRAPH

FIGURE NO

TABLE NO

IN THIS SPACE TELL WHAT IS WRONG AND WHAT SHOULD BE DONE ABOUT IT:

TEAR ALONG PERFORATED LINE

PRINTED NAME, GRADE OR TITLE, AND TELEPHONE NUMBER

SIGN HERE

DA FORM 1 JUL 79 2028-2

PREVIOUS EDITIONS ARE OBSOLETE.
DRSTS-M Overprint 2, 1 Nov 80.

P.S.--IF YOUR OUTFIT WANTS TO KNOW ABOUT YOUR RECOMMENDATION MAKE A CARBON COPY OF THIS AND GIVE IT TO YOUR HEADQUARTERS

FILL IN YOUR
UNIT'S ADDRESS

FOLD BACK

DEPARTMENT OF THE ARMY

OFFICIAL BUSINESS

COMMANDER
U S ARMY TROOP SUPPORT COMMAND
ATTN: AMSTR-MCTS
4300 GOODFELLOW BOULEVARD
ST. LOUIS, MO 63120-1798

TEAR ALONG PERFORATED LINE

The Metric System and Equivalents

Linear Measure

1 centimeter = 10 millimeters = .39 inch
 1 decimeter = 10 centimeters = 3.94 inches
 1 meter = 10 decimeters = 39.37 inches
 1 dekameter = 10 meters = 32.8 feet
 1 hectometer = 10 dekameters = 328.08 feet
 1 kilometer = 10 hectometers = 3,280.8 feet

Weights

1 centigram = 10 milligrams = .15 grain
 1 decigram = 10 centigrams = 1.54 grains
 1 gram = 10 decigram = .035 ounce
 1 dekagram = 10 grams = .35 ounce
 1 hectogram = 10 dekagrams = 3.52 ounces
 1 kilogram = 10 hectograms = 2.2 pounds
 1 quintal = 100 kilograms = 220.46 pounds
 1 metric ton = 10 quintals = 1.1 short tons

Liquid Measure

1 centiliter = 10 milliliters = .34 fl. ounce
 1 deciliter = 10 centiliters = 3.38 fl. ounces
 1 liter = 10 deciliters = 33.81 fl. ounces
 1 dekaliter = 10 liters = 2.64 gallons
 1 hectoliter = 10 dekaliters = 26.42 gallons
 1 kiloliter = 10 hectoliters = 264.18 gallons

Square Measure

1 sq. centimeter = 100 sq. millimeters = .155 sq. inch
 1 sq. decimeter = 100 sq. centimeters = 15.5 sq. inches
 1 sq. meter (centare) = 100 sq. decimeters = 10.76 sq. feet
 1 sq. dekameter (are) = 100 sq. meters = 1,076.4 sq. feet
 1 sq. hectometer (hectare) = 100 sq. dekameters = 2.47 acres
 1 sq. kilometer = 100 sq. hectometers = .386 sq. mile

Cubic Measure

1 cu. centimeter = 1000 cu. millimeters = .06 cu. inch
 1 cu. decimeter = 1000 cu. centimeters = 61.02 cu. inches
 1 cu. meter = 1000 cu. decimeters = 35.31 cu. feet

Approximate Conversion Factors

To change	To	Multiply by	To change	To	Multiply by
inches	centimeters	2.540	ounce-inches	newton-meters	.007062
feet	meters	.305	centimeters	inches	.394
yards	meters	.914	meters	feet	3.280
miles	kilometers	1.609	meters	yards	1.094
square inches	square centimeters	6.451	kilometers	miles	.621
square feet	square meters	.093	square centimeters	square inches	.155
square yards	square meters	.836	square meters	square feet	10.764
square miles	square kilometers	2.590	square meters	square yards	1.196
acres	square hectometers	.405	square kilometers	square miles	.386
cubic feet	cubic meters	.028	square hectometers	acres	2.471
cubic yards	cubic meters	.765	cubic meters	cubic feet	35.315
fluid ounces	milliliters	29.573	cubic meters	cubic yards	1.308
pints	liters	.473	milliliters	fluid ounces	.034
quarts	liters	.946	liters	pints	2.113
gallons	liters	3.785	liters	quarts	1.057
ounces	grams	28.349	liters	gallons	.264
pounds	kilograms	.454	grams	ounces	.035
short tons	metric tons	.907	kilograms	pounds	2.205
pound-feet	newton-meters	1.356	metric tons	short tons	1.102
pound-inches	newton-meters	.11296			

Temperature (Exact)

°F	Fahrenheit temperature	5/9 (after subtracting 32)	Celsius temperature	°C
----	------------------------	----------------------------	---------------------	----

